

PRESENTED BY

RIO  CAN
LIVING

METROPIA



WO
RENOV
DES

WORLD OWNED SIGN

11|YV

11 YORKVILLE • TORONTO





SUITE

MS

Luxury and performance combine with delight in the interiors at 11 Yorkville, resulting in suites that are both sleek and sensual. Ranging from 400 to nearly 1,200 square feet, every home is opulently outfitted in warm wood, smooth marble, and expansive glass.

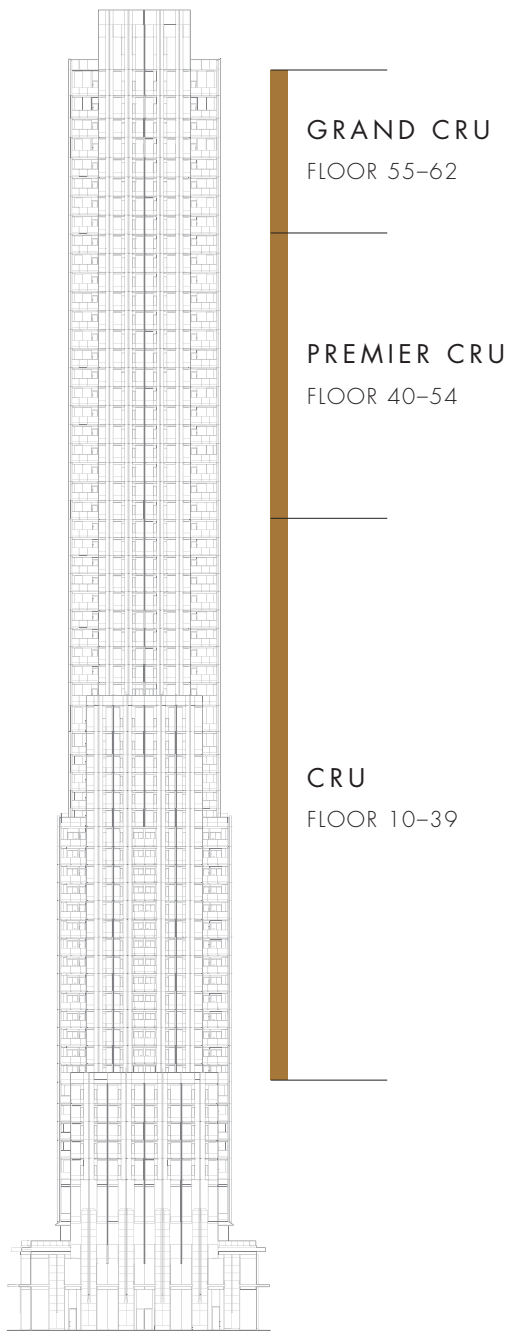
Introducing the Cru Collections – Cru Residences, Premier Cru Residences and Grand Cru Residences at 11YV. Spa-inspired bathrooms, tiled tip-toe in intricate mosaic, give the sensation of being wrapped in an exquisite embrace. Sumptuous kitchens include everything you need to toast the good life - a built-in wine fridge, wine storage, integrated chilling stations, and a custom-designed marble island with waterfall detailing and seating for up to six. Whichever collection you choose, it's simply a matter of choosing between the best.





SUITE INTERIOR

CRU COLLECTIONS



CRU RESIDENCES

FLOORS 10-39

SUITES

- 9 ft. ceilings (exclusive of bulkheads)
- Smooth finish ceilings
- Designer selected engineered wood flooring throughout (tiled flooring in bathroom and laundry)
- Contemporary baseboards and casing
- Solid core entry door
- Stacked washer/dryer
- Sliding or swing door to balcony or terrace, as per plan

KITCHEN

- 24" Miele kitchen package with 5 appliances (Integrated fridge, built-in wall oven, electric cooktop, integrated dishwasher, and built-in microwave) included in Studio, 1 Bedroom & 2 Bedroom suites
- 24" integrated stainless steel hood fan) included in Studio, 1 Bedroom & 2 Bedroom suites
- Miele kitchen package with 5 appliances (full-size 30" integrated fridge, 30" built-in wall oven, 30" electric cooktop, integrated dishwasher, and built-in microwave) included in 3 Bedroom suites
- 30" integrated stainless steel hood fan included in 3 Bedroom suites
- Contemporary kitchen cabinetry designed by Cecconi Simone with choice of finish, backlit frosted glass upper cabinets and under cabinet lighting
- Contemporary island designed by Cecconi Simone with integrated 4 or 6 person dining table (as per plan). Island features built-in wine fridge, integrated chilling station, wine bottle storage shelving, stemware storage, USB outlet and waterfall counter detailing included in 1 Bedroom, 2 Bedroom & 3 Bedroom suites
- Composite countertop with matching backsplash and hood enclosure
- Single undermount stainless steel sink with contemporary faucet and pull-out spray

BATHROOMS

- Cecconi Simone designed floating vanity and integrated sink with choice of finishes
- Polished chrome wall-mounted faucet
- Mirrored front cabinet with adjustable shelves, wood finish and recessed lighting
- Full-height wall tiling on vanity wall
- Walk-in shower with tile floor or soaker bathtub, each with full-height tiled walls included in 1 Bedroom, 2 Bedroom & 3 Bedroom suites
- Soaker bathtub included in Studio suites
- Tiled floors included in Studio suites
- Glass partition and door, as per floor plan
- Pressure balanced valve for tub/shower, handshower and rainhead, as per floor plan
- Recessed potlight in the shower

PREMIER CRU RESIDENCES
FLOORS 40–54

SUITES

- 9.5 ft. ceilings (exclusive of bulkheads)
- Smooth finish ceilings
- Designer selected engineered wood flooring throughout (tiled flooring in bathroom and laundry)
- Contemporary baseboards and casing
- Solid core entry door
- Stacked washer/dryer
- Designer master suite closet organizers with built-in shelving

KITCHEN

- 24" Miele kitchen package with 5 appliances (Integrated fridge, built-in wall oven, electric cooktop, integrated dishwasher, and built-in microwave) included in 1 Bedroom & 2 Bedroom suites
- 24" integrated stainless steel hood fan included in 1 Bedroom & 2 Bedroom suites
- Miele kitchen package with 5 appliances (full-size 30" integrated fridge, 30" built-in wall oven, 30" electric cooktop, integrated dishwasher, and built-in microwave) included in 3 Bedroom suites
- 30" integrated stainless steel hood fan included in 3 Bedroom suites
- Contemporary kitchen cabinetry designed by Cecconi Simone with choice of finish, backlit frosted glass upper cabinets and under cabinet lighting
- Contemporary island designed by Cecconi Simone with integrated 4 or 6 person dining table (as per plan). Island features built-in wine fridge, integrated chilling station, wine bottle storage shelving, stemware storage, USB outlet and waterfall counter detailing
- Linear LED pendant fixture above island
- Choice of composite or marble countertop finish with matching backsplash and hood enclosure
- Single undermount stainless steel sink with contemporary faucet and pull-out spray

BATHROOMS

- Cecconi Simone designed floating vanity and integrated sink with choice of finishes
- Polished chrome wall-mounted faucet
- Mirrored front cabinet with adjustable shelves, wood finish and recessed lighting
- Full-height wall tiling on master suite vanity wall and two adjacent walls
- Walk-in shower with tile floor or soaker bathtub, each with full-height tiled walls
- Tinted glass partition and door, as per floor plan
- Pressure balanced valve for tub/shower, handshower and rainhead, as per floor plan
- Recessed potlight in the shower

GRAND CRU RESIDENCES
FLOORS 55–62

SUITES

- 10 ft. ceilings (exclusive of bulkheads)
- Smooth finish ceilings
- Designer selected engineered wood flooring throughout (tiled flooring in bathroom and laundry)
- Contemporary baseboards and casing
- Solid core entry door
- Stacked washer/dryer
- Designer closet organizers with built-in shelving

KITCHEN

- 24" Miele kitchen package with 5 appliances (Integrated fridge, built-in wall oven, electric cooktop, integrated dishwasher, and built-in microwave) included in 1 Bedroom & 2 Bedroom suites
- 24" integrated stainless steel hood fan included in 1 Bedroom & 2 Bedroom suites
- Miele kitchen package with 5 appliances (full-size 30" integrated fridge, 30" built-in wall oven, 30" electric cooktop, integrated dishwasher, and built-in microwave) included in 3 Bedroom suites
- 30" integrated stainless steel hood fan included in 3 Bedroom suites
- Contemporary kitchen cabinetry designed by Cecconi Simone with choice of finish, backlit frosted glass upper cabinets and under cabinet lighting
- Contemporary island designed by Cecconi Simone with integrated 4 or 6 person dining table (as per plan). Island features built-in wine fridge, integrated chilling station, wine bottle storage shelving, stemware storage, USB outlet and waterfall counter detailing
- Linear LED pendant fixture above island
- Choice of composite or marble countertop finish with matching backsplash and hood enclosure
- Single undermount stainless steel sink with contemporary faucet and pull-out spray

BATHROOMS

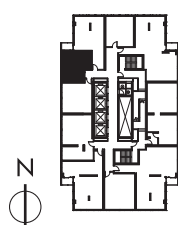
- Cecconi Simone designed floating vanity and integrated sink with choice of finishes
- Polished chrome wall-mounted faucet
- Mirrored front cabinet with adjustable shelves, wood finish and recessed lighting
- Full-height wall tiling on master suite vanity wall and two adjacent walls
- Walk-in shower with tile floor or soaker bathtub, each with full-height tiled walls
- Tinted glass partition and door, as per floor plan
- Pressure balanced valve for tub/shower, handshower and rainhead, as per floor plan
- Recessed potlight in the shower

1. The Vendor reserves the right, with respect to any aspect of construction, finishing or equipment, to make substitutes and changes to the information contained herein without notices; so long as in the Vendor's sole and unreviewable discretion any substituted materials and/or changes are of at least comparable quality. 2. Floors and specific finishes will depend on Vendor's packages as selected. The Purchaser upon request by the Vendor shall meet with the Vendor or its representative and shall select certain colours and materials from Vendor's finish packages. 3. The Vendor shall not be responsible for shade differences occurring from different dye lots or characteristics of natural material, including with respect to tiles, carpets, hardwood flooring, kitchen cabinets, trim and doors as the case may be. Details of the entry doors and other design features may not be exactly as shown on renderings. 4. All dimensions are subject to normal construction variances. Dimensions including ceiling heights, sizes, specifications, layouts and materials are approximate only and subject to change without notice. 5. The installation of some features and finishes may vary by suite design and normal construction variances. 6. Illustrations are artists concepts. E.&O.E.

11|YV YORKVILLE 1

11 YORKVILLE • TORONTO

BACHELOR 387 SQ. FT.



LEVEL 28-29 – UNIT 02
CRU RESIDENCES

RIO CAN
LIVING

METROPIA

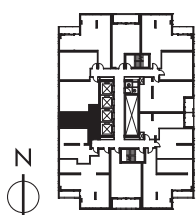
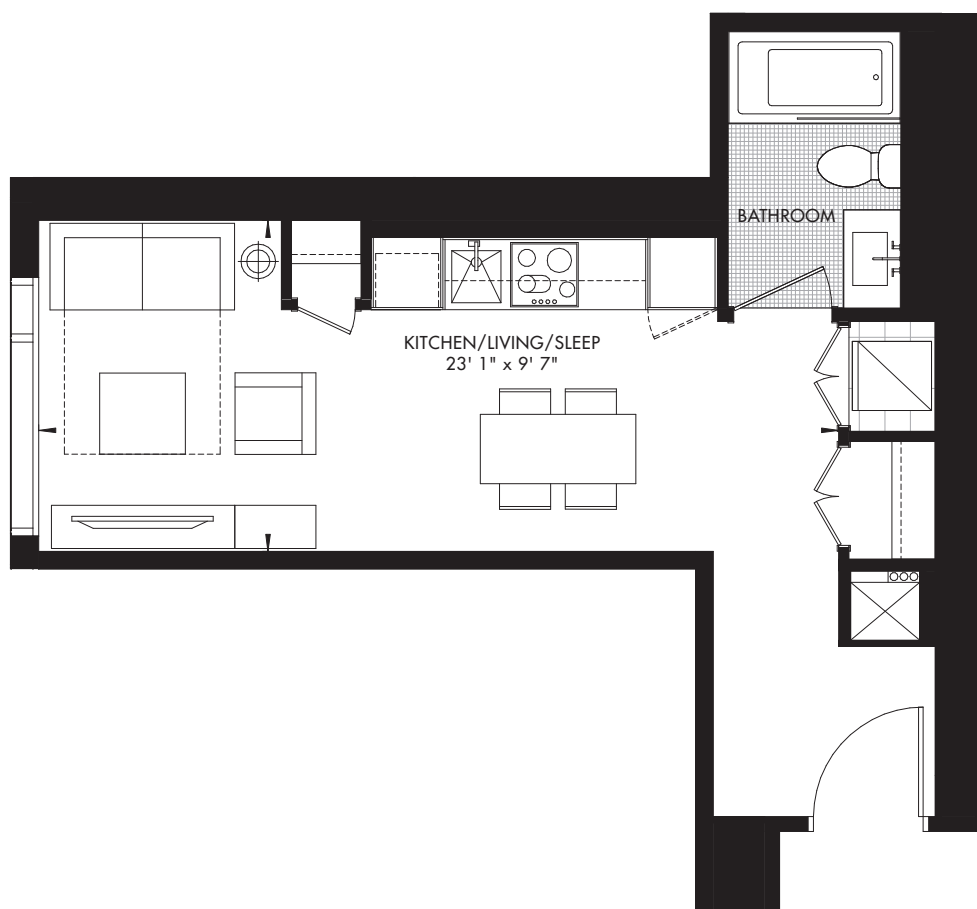


Prices and specifications subject to change without notice. E. & O.E. The dimensions shown on this plan are approximate only. Actual useable floor space within the unit may vary from any stated floor areas or dimensions on this plan. For more information on the method used for calculating the floor area of any unit reference should be made to builder bulletin no. 22 Published by Tarion. The size, location and/or configuration of the windows and spandrel glass shown may be changed, varied or mirrored.

11|YV YORKVILLE 2

11 YORKVILLE • TORONTO

BACHELOR 404 SQ. FT.



LEVEL 10-23 – UNIT 14
CRU RESIDENCES

RIO CAN
LIVING

METROPIA

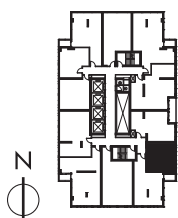
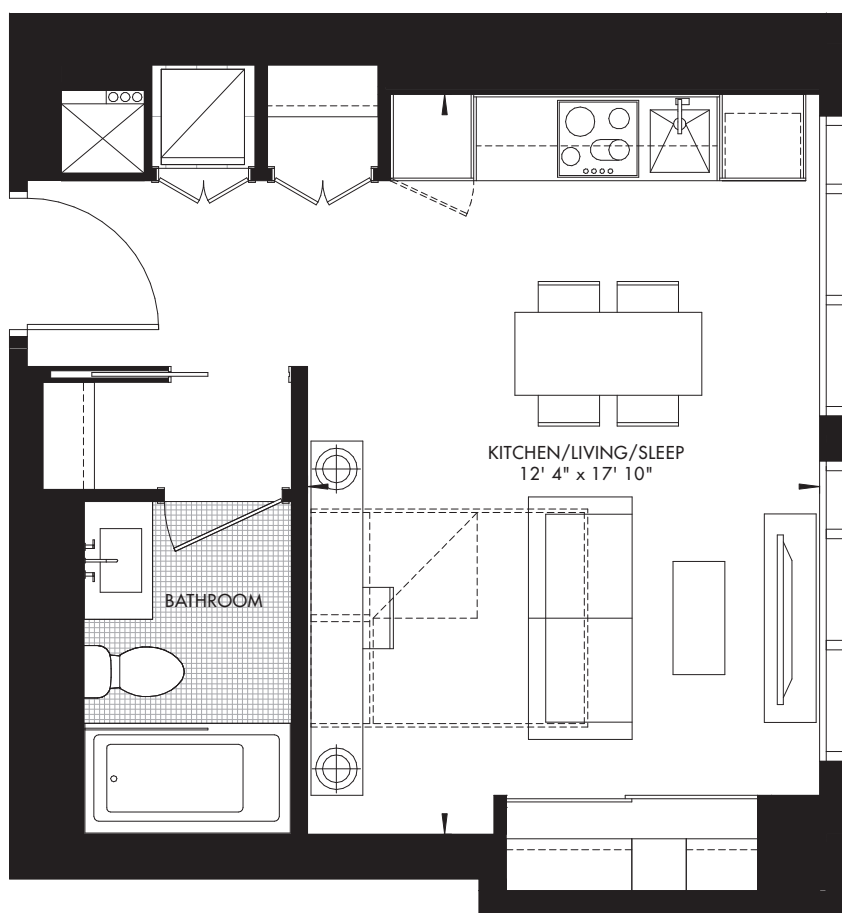


Prices and specifications subject to change without notice. E. & O.E. The dimensions shown on this plan are approximate only. Actual useable floor space within the unit may vary from any stated floor areas or dimensions on this plan. For more information on the method used for calculating the floor area of any unit reference should be made to builder bulletin no.22 Published by Tarion. The size, location and/or configuration of the windows and spandrel glass shown may be changed, varied or mirrored.

11|YV YORKVILLE 3

11 YORKVILLE • TORONTO

BACHELOR 412 SQ. FT.



LEVEL 25-28 – UNIT 08
CRU RESIDENCES

RIOCAN
LIVING

METROPIA

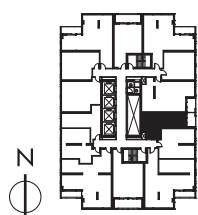
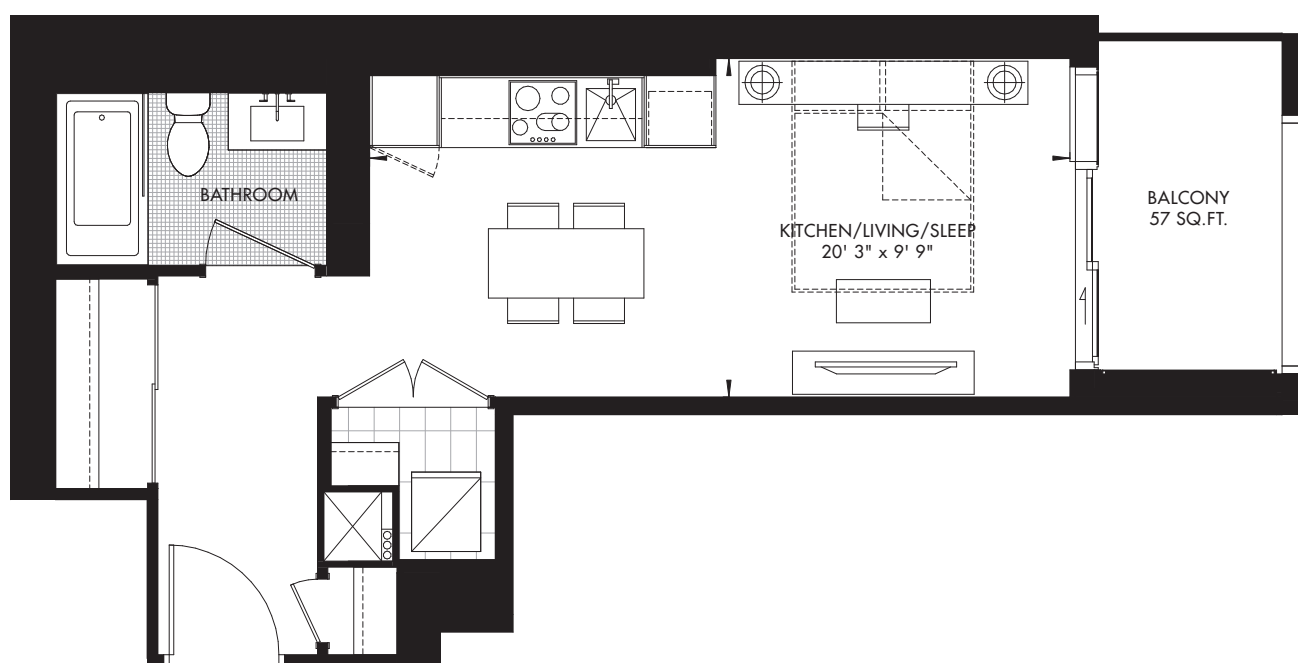


Prices and specifications subject to change without notice. E. & O.E. The dimensions shown on this plan are approximate only. Actual useable floor space within the unit may vary from any stated floor areas or dimensions on this plan. For more information on the method used for calculating the floor area of any unit reference should be made to builder bulletin no.22 Published by Tarion. The size, location and/or configuration of the windows and spandrel glass shown may be changed, varied or mirrored.

11|YV YORKVILLE 4

11 YORKVILLE • TORONTO

BACHELOR 421 SQ. FT.



LEVEL 10-23 – UNIT 08
CRU RESIDENCES

RIO CAN
LIVING

METROPIA

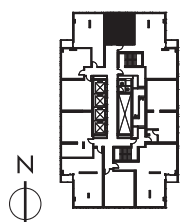
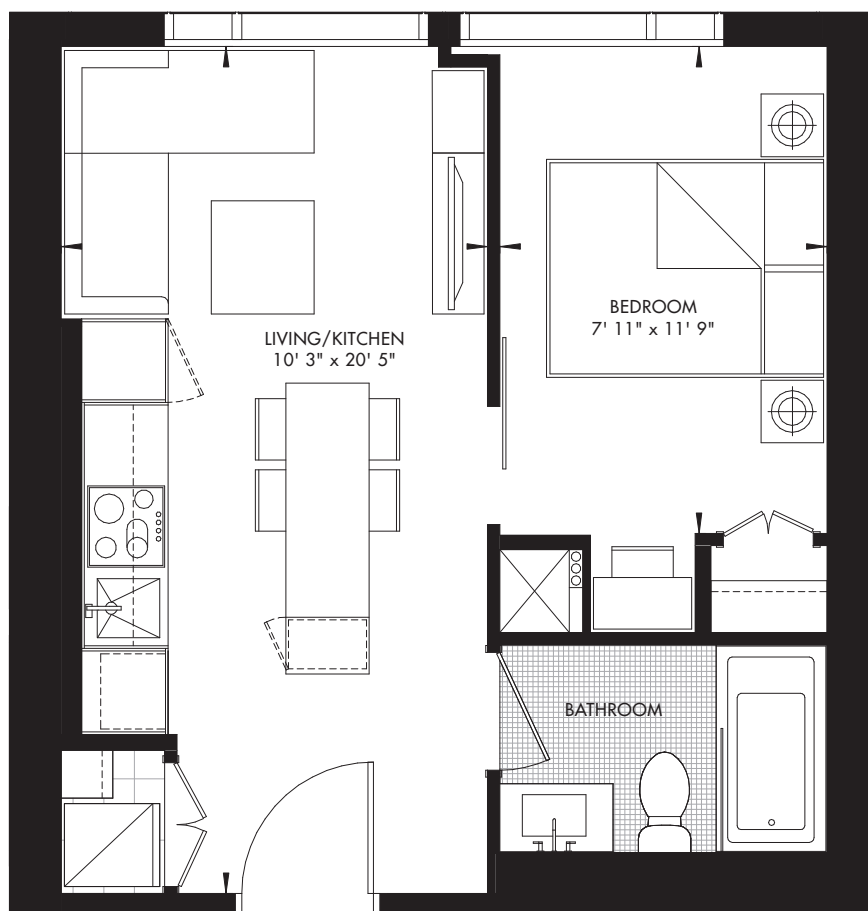


Prices and specifications subject to change without notice. E. & O.E. The dimensions shown on this plan are approximate only. Actual useable floor space within the unit may vary from any stated floor areas or dimensions on this plan. For more information on the method used for calculating the floor area of any unit reference should be made to builder bulletin no.22 Published by Tarion. The size, location and/or configuration of the windows and spandrel glass shown may be changed, varied or mirrored.

11|YV YORKVILLE 5

11 YORKVILLE • TORONTO

1 BED 425 SQ. FT.



LEVEL 29 – UNIT 04
CRU RESIDENCES

RIOCAN
LIVING

METROPIA

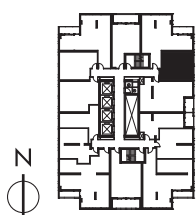
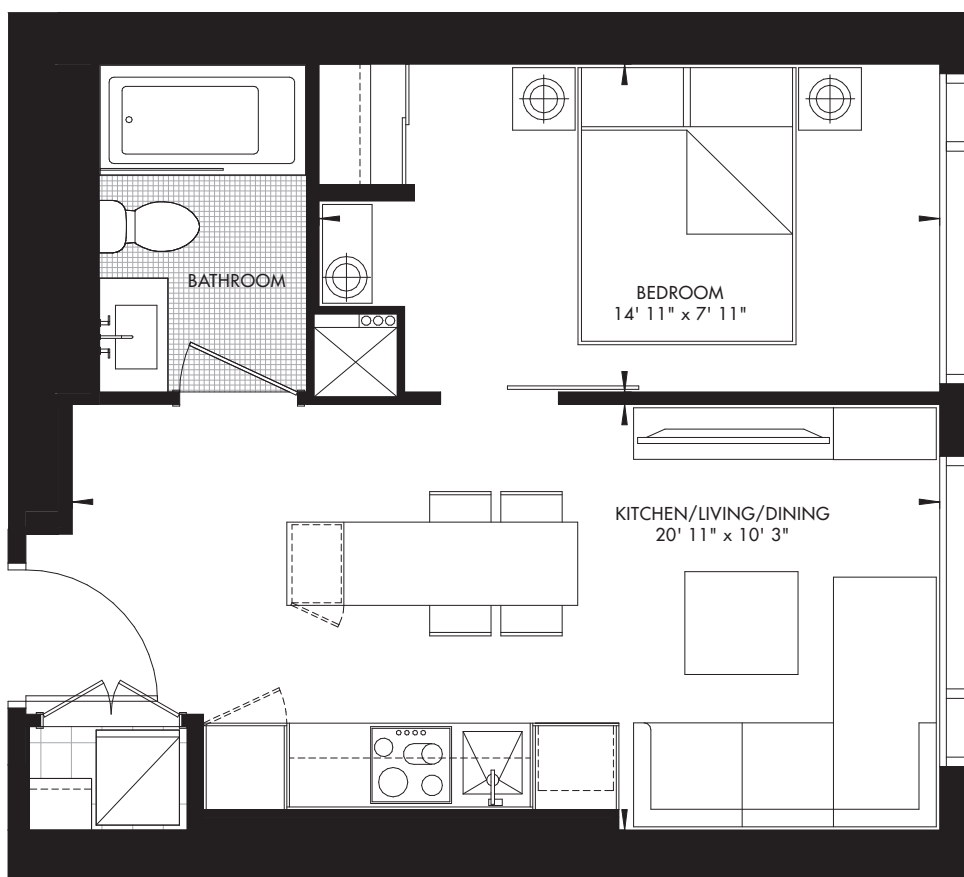


Prices and specifications subject to change without notice. E. & O.E. The dimensions shown on this plan are approximate only. Actual useable floor space within the unit may vary from any stated floor areas or dimensions on this plan. For more information on the method used for calculating the floor area of any unit reference should be made to builder bulletin no.22 Published by Tarion. The size, location and/or configuration of the windows and spandrel glass shown may be changed, varied or mirrored.

11|YV YORKVILLE 6

11 YORKVILLE • TORONTO

1 BED 449 SQ. FT.



LEVEL 10-23 – UNIT 06
CRU RESIDENCES

RIO CAN
LIVING

METROPIA

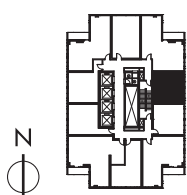
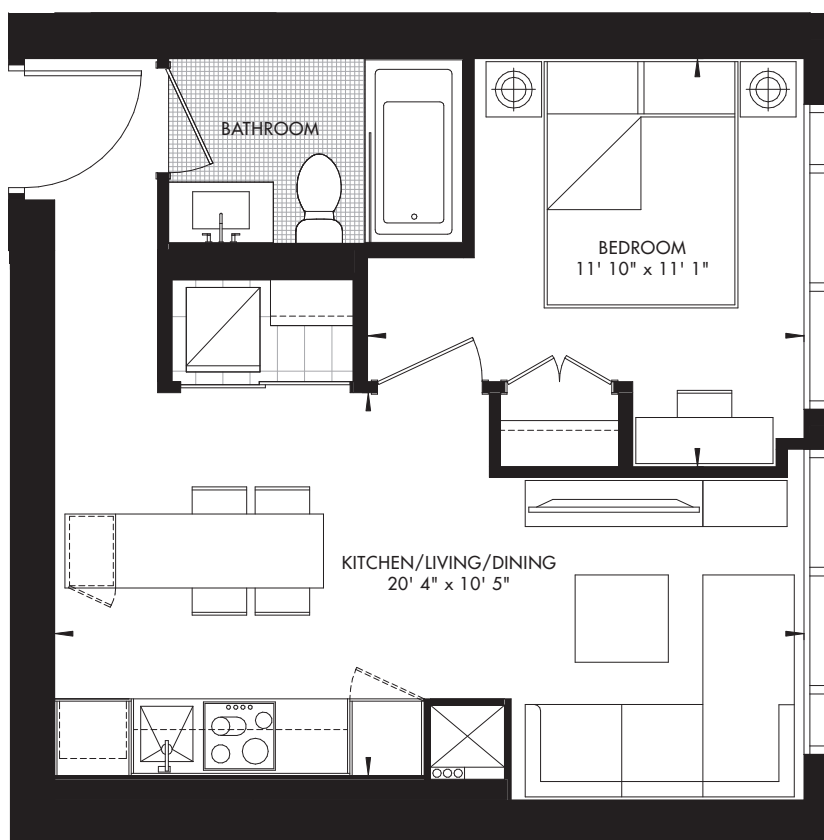


Prices and specifications subject to change without notice. E. & O.E. The dimensions shown on this plan are approximate only. Actual useable floor space within the unit may vary from any stated floor areas or dimensions on this plan. For more information on the method used for calculating the floor area of any unit reference should be made to builder bulletin no.22 Published by Tarion. The size, location and/or configuration of the windows and spandrel glass shown may be changed, varied or mirrored.

11|YV YORKVILLE 7

11 YORKVILLE • TORONTO

1 BED 477 SQ. FT.



LEVEL 31-62 – UNIT 05
CRU RESIDENCES, PREMIER CRU RESIDENCES, GRAND CRU RESIDENCES

RIOCAN
LIVING

METROPIA

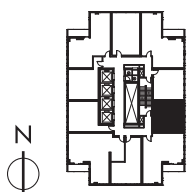


Prices and specifications subject to change without notice. E. & O.E. The dimensions shown on this plan are approximate only. Actual useable floor space within the unit may vary from any stated floor areas or dimensions on this plan. For more information on the method used for calculating the floor area of any unit reference should be made to builder bulletin no.22 Published by Tarion. The size, location and/or configuration of the windows and spandrel glass shown may be changed, varied or mirrored.

11|YV YORKVILLE 8

11 YORKVILLE • TORONTO

1 BED 477 SQ. FT.



LEVEL 31-62 – UNIT 06
CRU RESIDENCES, PREMIER CRU RESIDENCES, GRAND CRU RESIDENCES

RIO CAN
LIVING

METROPIA

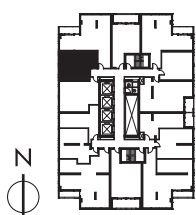
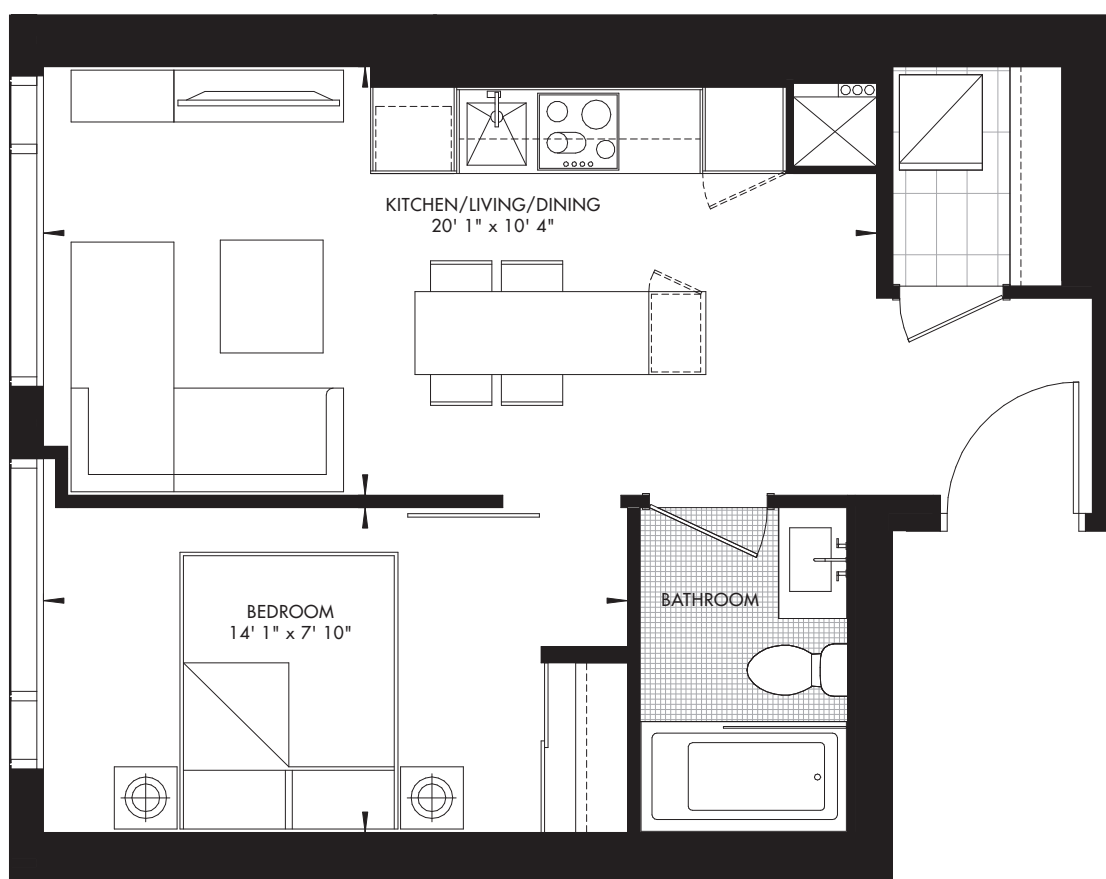


Prices and specifications subject to change without notice. E. & O.E. The dimensions shown on this plan are approximate only. Actual useable floor space within the unit may vary from any stated floor areas or dimensions on this plan. For more information on the method used for calculating the floor area of any unit reference should be made to builder bulletin no.22 Published by Tarion. The size, location and/or configuration of the windows and spandrel glass shown may be changed, varied or mirrored.

11|YV YORKVILLE 9

11 YORKVILLE • TORONTO

1 BED 478 SQ. FT.



LEVEL 10-23 – UNIT 02
CRU RESIDENCES

RIOCAN
LIVING

METROPIA

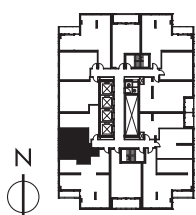
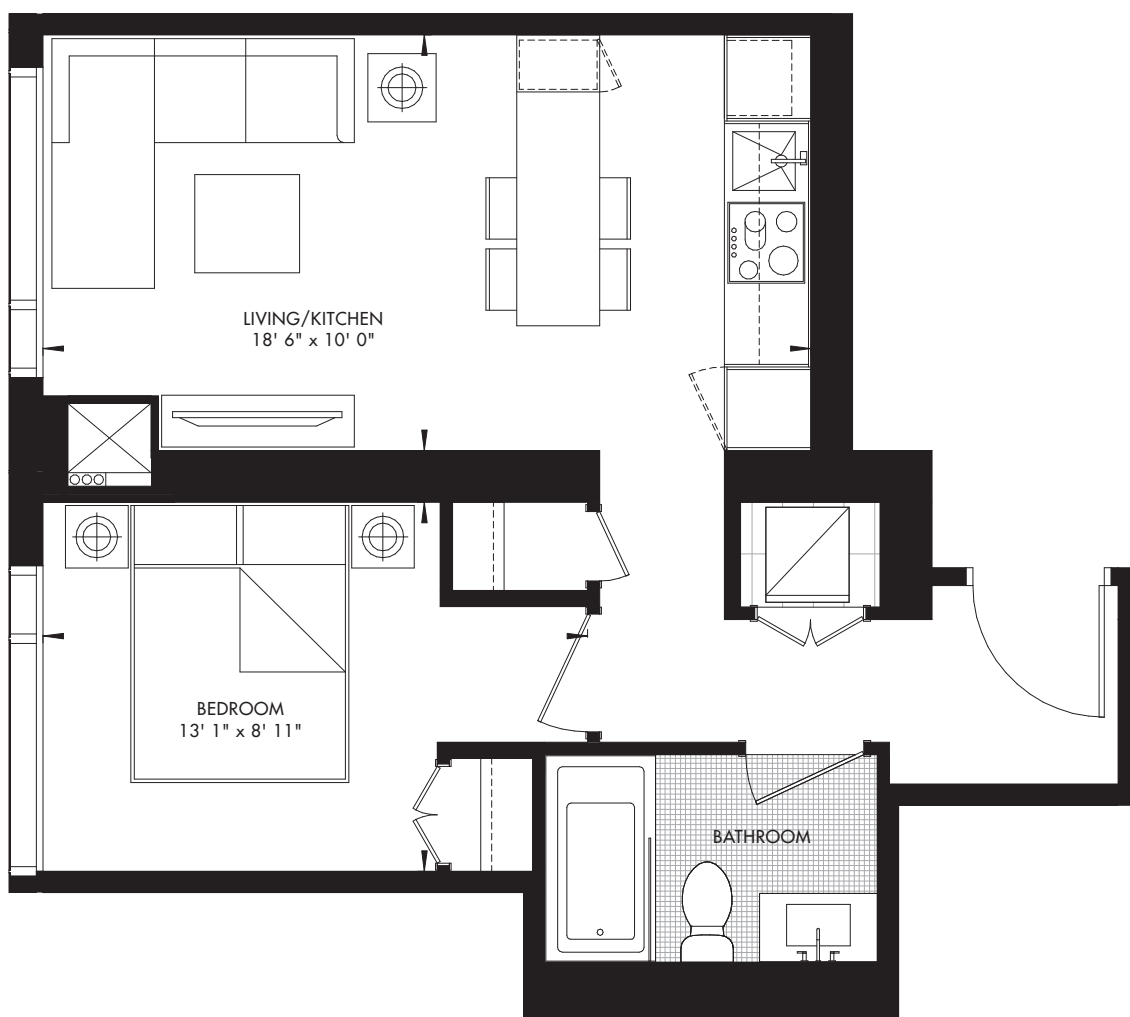


Prices and specifications subject to change without notice. E. & O.E. The dimensions shown on this plan are approximate only. Actual useable floor space within the unit may vary from any stated floor areas or dimensions on this plan. For more information on the method used for calculating the floor area of any unit reference should be made to builder bulletin no.22 Published by Tarion. The size, location and/or configuration of the windows and spandrel glass shown may be changed, varied or mirrored.

11|YV YORKVILLE 10

11 YORKVILLE • TORONTO

1 BED 487 SQ. FT.



LEVEL 10-23 – UNIT 13
CRU RESIDENCES

RIO CAN
LIVING

METROPIA

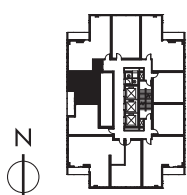
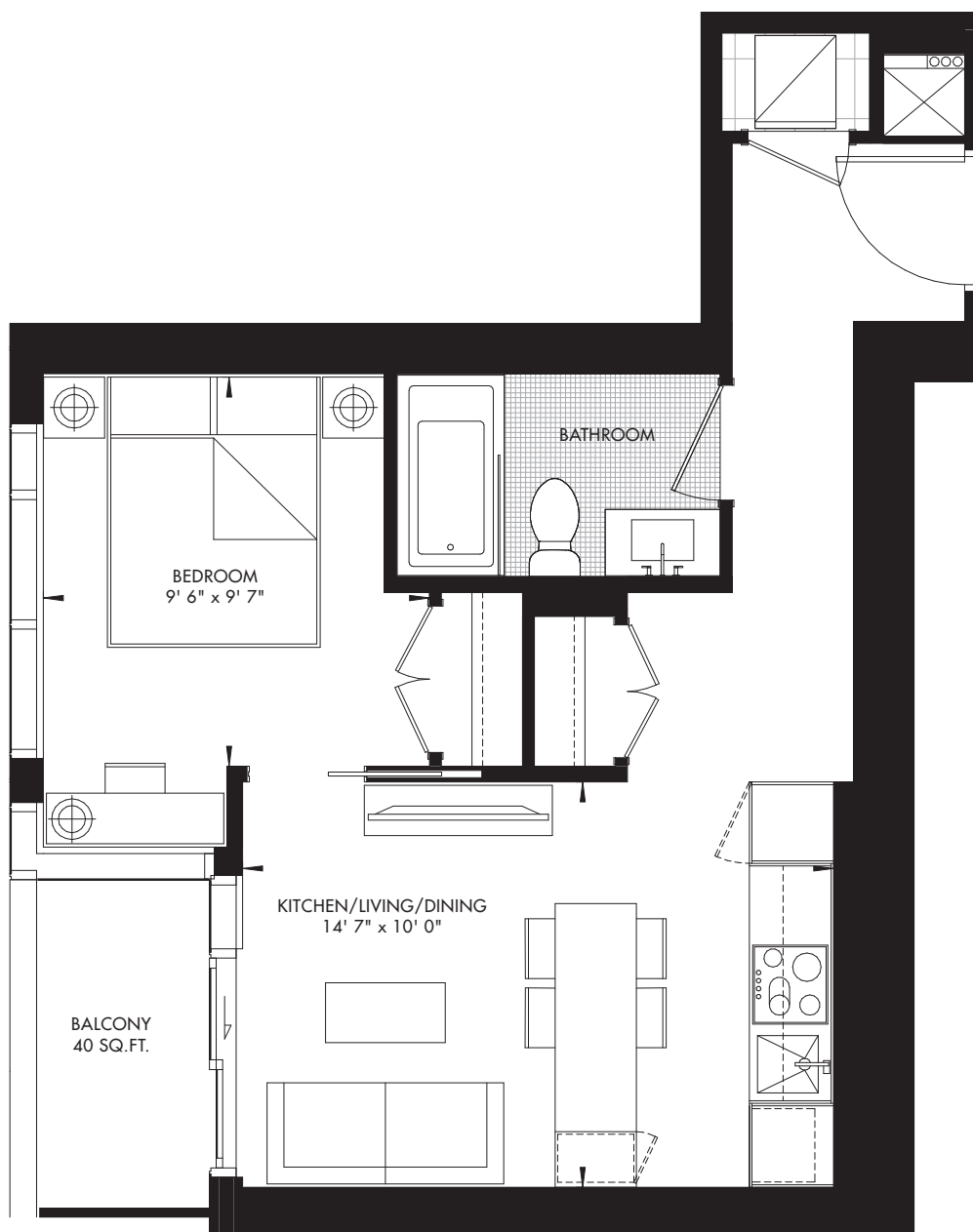


Prices and specifications subject to change without notice. E. & O.E. The dimensions shown on this plan are approximate only. Actual useable floor space within the unit may vary from any stated floor areas or dimensions on this plan. For more information on the method used for calculating the floor area of any unit reference should be made to builder bulletin no.22 Published by Tarion. The size, location and/or configuration of the windows and spandrel glass shown may be changed, varied or mirrored.

11|YV YORKVILLE 11

11 YORKVILLE • TORONTO

1 BED 490 SQ. FT.



LEVEL 40-43 – UNIT 01
PREMIER CRU RESIDENCES

RIO CAN
LIVING

METROPIA

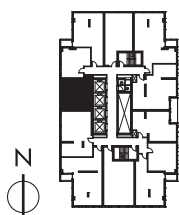
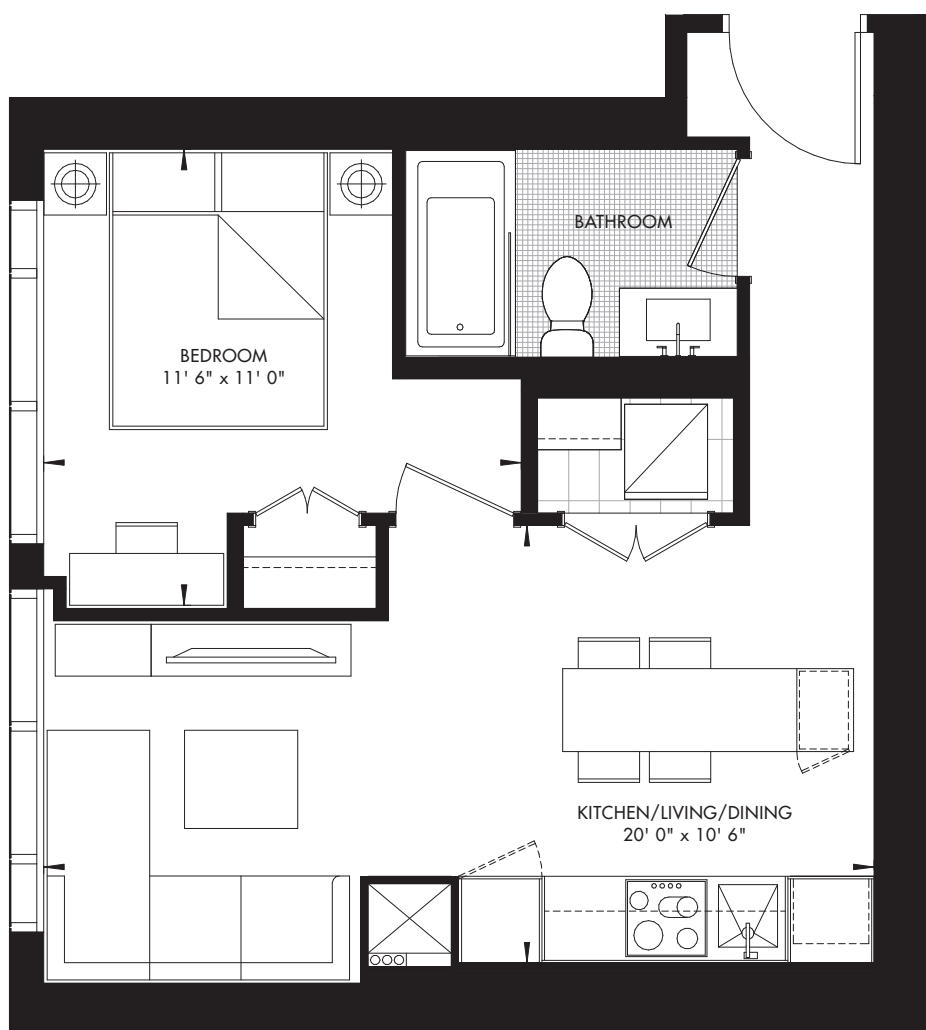


Prices and specifications subject to change without notice. E. & O.E. The dimensions shown on this plan are approximate only. Actual useable floor space within the unit may vary from any stated floor areas or dimensions on this plan. For more information on the method used for calculating the floor area of any unit reference should be made to builder bulletin no.22 Published by Tarion. The size, location and/or configuration of the windows and spandrel glass shown may be changed, varied or mirrored.

11|YV YORKVILLE 12

11 YORKVILLE • TORONTO

1 BED 492 SQ. FT.



LEVEL 25-29 – UNIT 01
CRU RESIDENCES

RIO CAN
LIVING

METROPIA

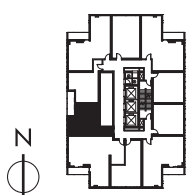
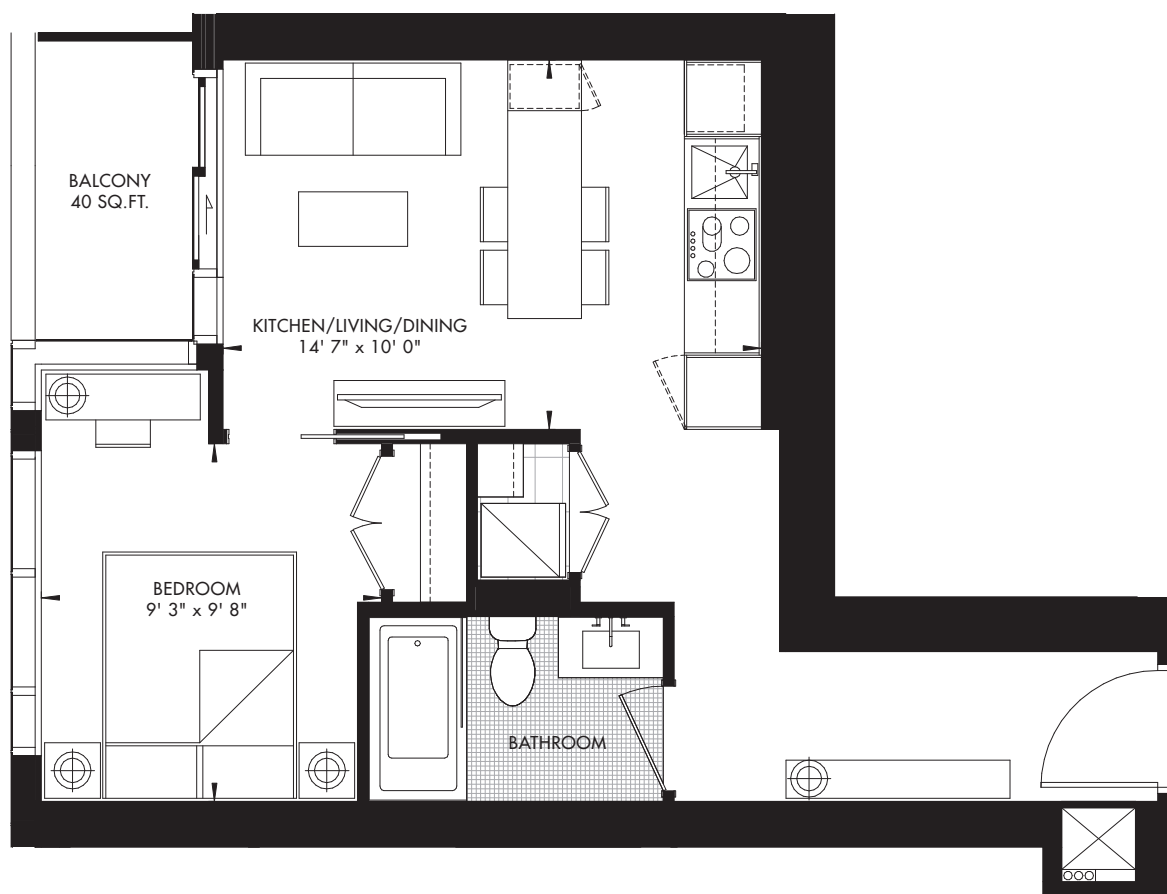


Prices and specifications subject to change without notice. E. & O.E. The dimensions shown on this plan are approximate only. Actual useable floor space within the unit may vary from any stated floor areas or dimensions on this plan. For more information on the method used for calculating the floor area of any unit reference should be made to builder bulletin no.22 Published by Tarion. The size, location and/or configuration of the windows and spandrel glass shown may be changed, varied or mirrored.

11|YV YORKVILLE 13

11 YORKVILLE • TORONTO

1 BED 498 SQ. FT.



LEVEL 40-43 – UNIT 10
PREMIER CRU RESIDENCES

RIO CAN
LIVING

METROPIA

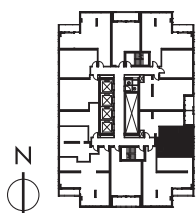
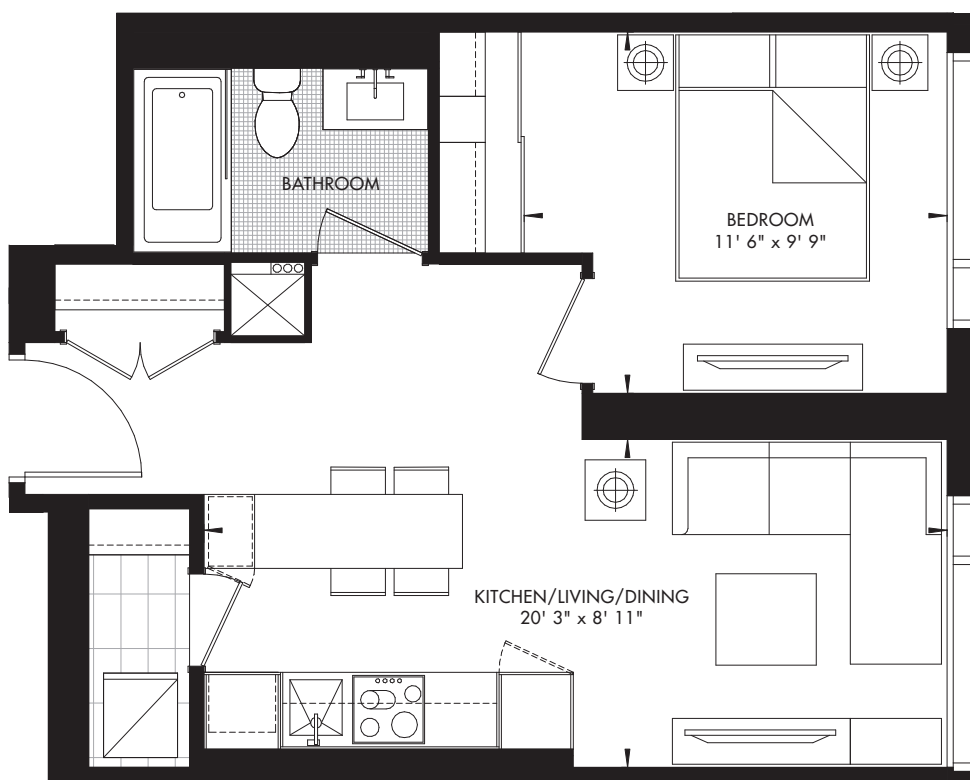


Prices and specifications subject to change without notice. E. & O.E. The dimensions shown on this plan are approximate only. Actual useable floor space within the unit may vary from any stated floor areas or dimensions on this plan. For more information on the method used for calculating the floor area of any unit reference should be made to builder bulletin no.22 Published by Tarion. The size, location and/or configuration of the windows and spandrel glass shown may be changed, varied or mirrored.

11|YV YORKVILLE 14

11 YORKVILLE • TORONTO

1 BED 504 SQ. FT.



LEVEL 10-23 – UNIT 09
CRU RESIDENCES

RIO CAN
LIVING

METROPIA

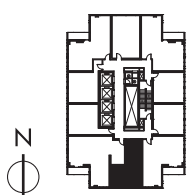
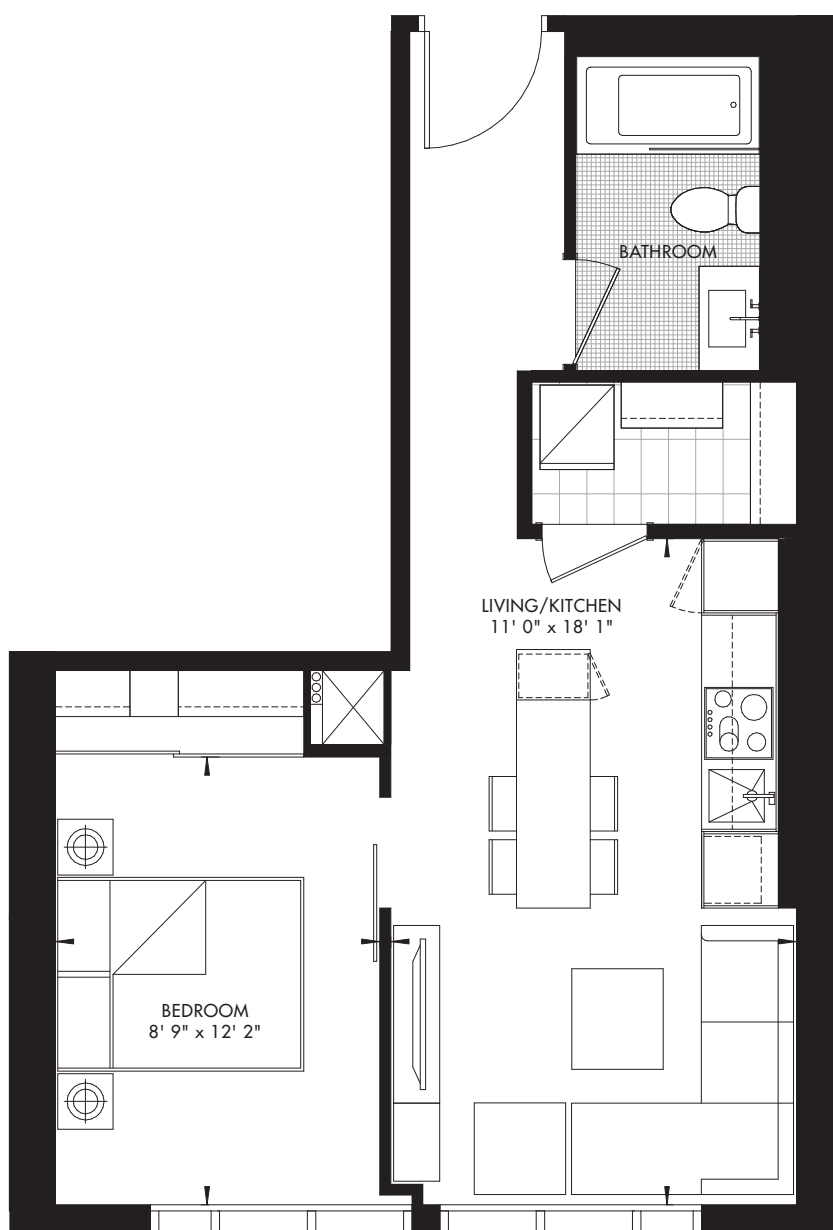


Prices and specifications subject to change without notice. E. & O.E. The dimensions shown on this plan are approximate only. Actual useable floor space within the unit may vary from any stated floor areas or dimensions on this plan. For more information on the method used for calculating the floor area of any unit reference should be made to builder bulletin no.22 Published by Tarion. The size, location and/or configuration of the windows and spandrel glass shown may be changed, varied or mirrored.

11|YV YORKVILLE 15

11 YORKVILLE • TORONTO

1 BED 530 SQ. FT.



LEVEL 31-62 – UNIT 08
CRU RESIDENCES, PREMIER CRU RESIDENCES, GRAND CRU RESIDENCES

RIO CAN
LIVING

METROPIA

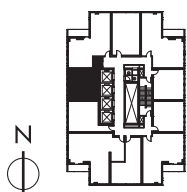
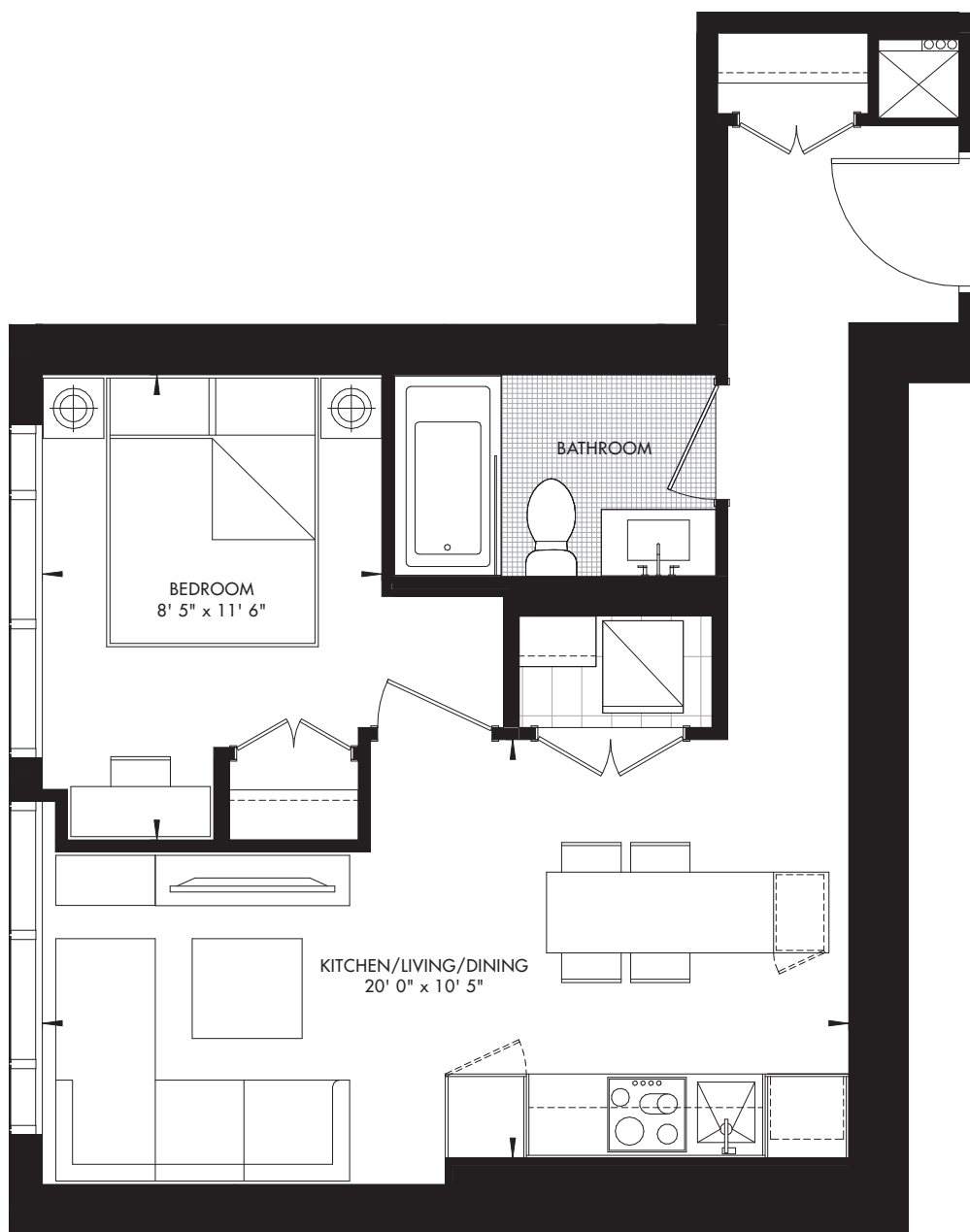


Prices and specifications subject to change without notice. E. & O.E. The dimensions shown on this plan are approximate only. Actual useable floor space within the unit may vary from any stated floor areas or dimensions on this plan. For more information on the method used for calculating the floor area of any unit reference should be made to builder bulletin no.22 Published by Tarion. The size, location and/or configuration of the windows and spandrel glass shown may be changed, varied or mirrored.

11|YV YORKVILLE 16

11 YORKVILLE • TORONTO

1 BED 531 SQ. FT.



LEVEL 30-39 – UNIT 01
CRU RESIDENCES

RIO CAN
LIVING

METROPIA

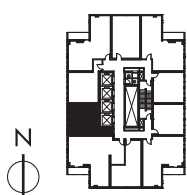
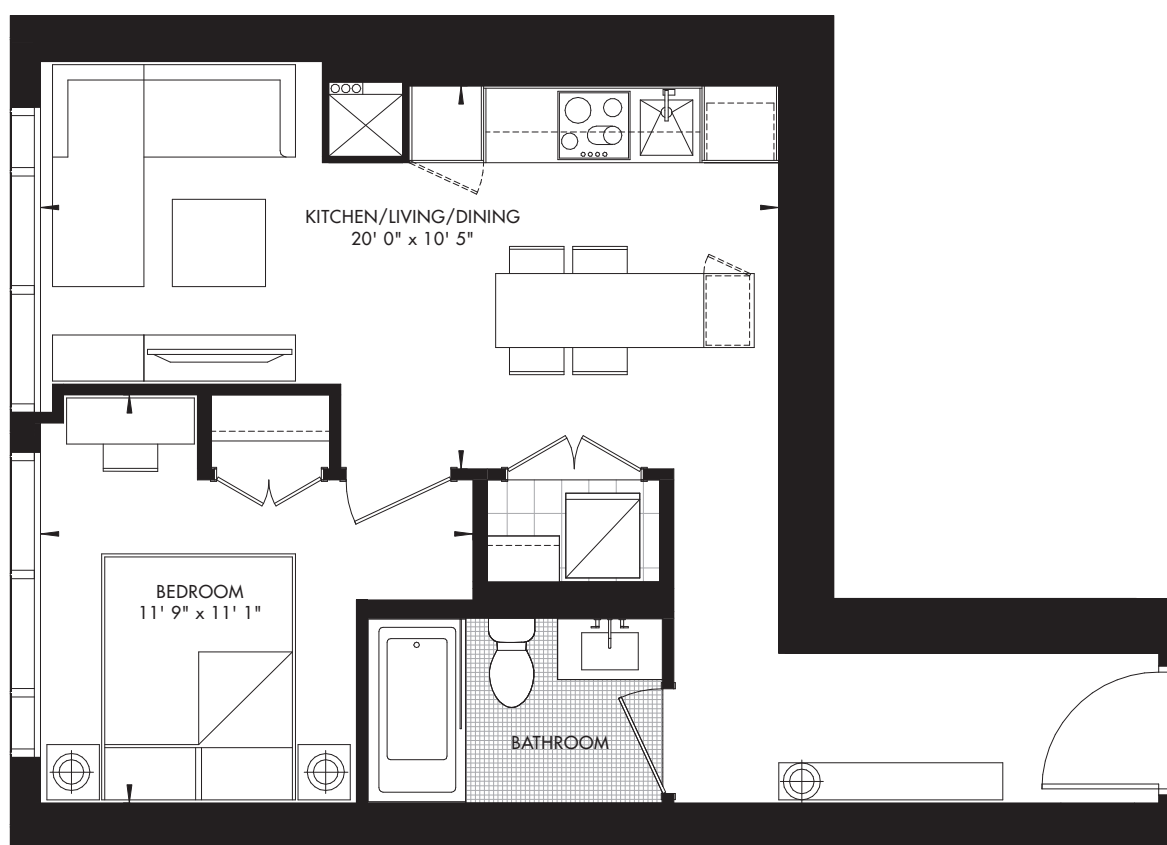


Prices and specifications subject to change without notice. E. & O.E. The dimensions shown on this plan are approximate only. Actual useable floor space within the unit may vary from any stated floor areas or dimensions on this plan. For more information on the method used for calculating the floor area of any unit reference should be made to builder bulletin no.22 Published by Tarion. The size, location and/or configuration of the windows and spandrel glass shown may be changed, varied or mirrored.

11|YV YORKVILLE 17

11 YORKVILLE • TORONTO

1 BED 532 SQ. FT.



LEVEL 30 – UNIT 08
LEVEL 31–39 – UNIT 10
CRU RESIDENCES

RIO CAN
LIVING

METROPIA

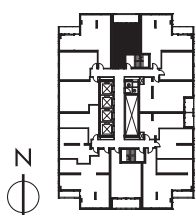
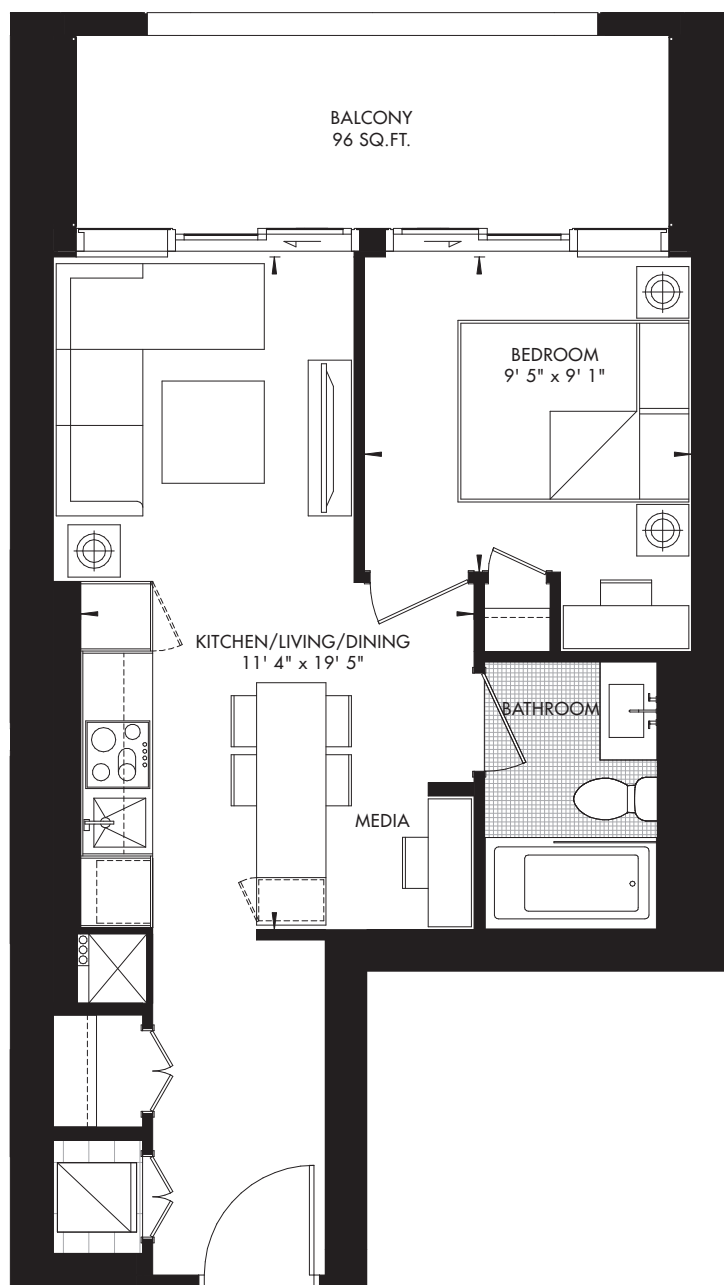


Prices and specifications subject to change without notice. E. & O.E. The dimensions shown on this plan are approximate only. Actual useable floor space within the unit may vary from any stated floor areas or dimensions on this plan. For more information on the method used for calculating the floor area of any unit reference should be made to builder bulletin no.22 Published by Tarion. The size, location and/or configuration of the windows and spandrel glass shown may be changed, varied or mirrored.

11|YV YORKVILLE 18

11 YORKVILLE • TORONTO

1 BED + MEDIA 512 SQ. FT.



LEVEL 11-23 – UNIT 04
CRU RESIDENCES

RIO CAN
LIVING

METROPIA

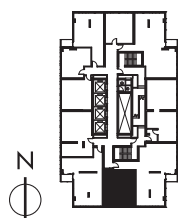
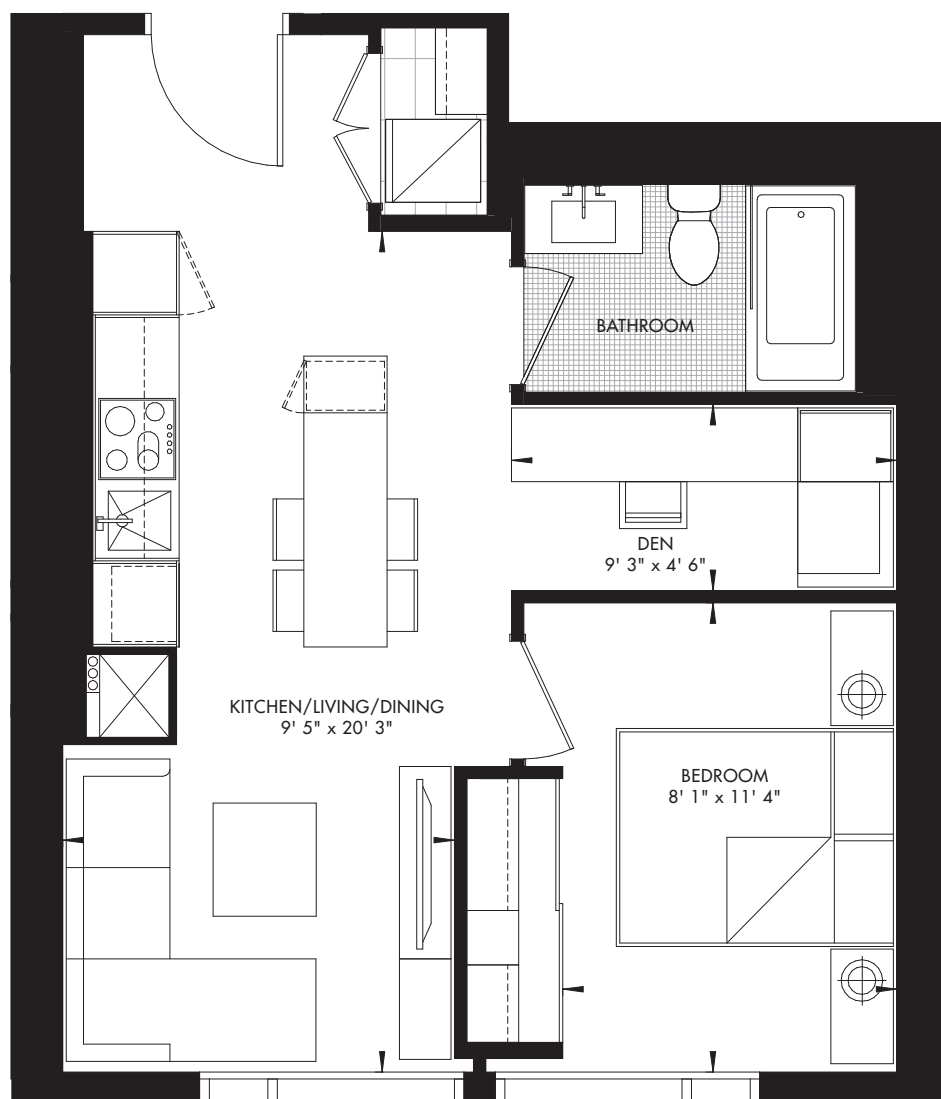


Prices and specifications subject to change without notice. E. & O.E. The dimensions shown on this plan are approximate only. Actual useable floor space within the unit may vary from any stated floor areas or dimensions on this plan. For more information on the method used for calculating the floor area of any unit reference should be made to builder bulletin no. 22 Published by Tarion. The size, location and/or configuration of the windows and spandrel glass shown may be changed, varied or mirrored.

11|YV YORKVILLE 19

11 YORKVILLE • TORONTO

1 BED + DEN 531 SQ. FT.



LEVEL 29 – UNIT 07
CRU RESIDENCES

RIOCAN
LIVING

METROPIA

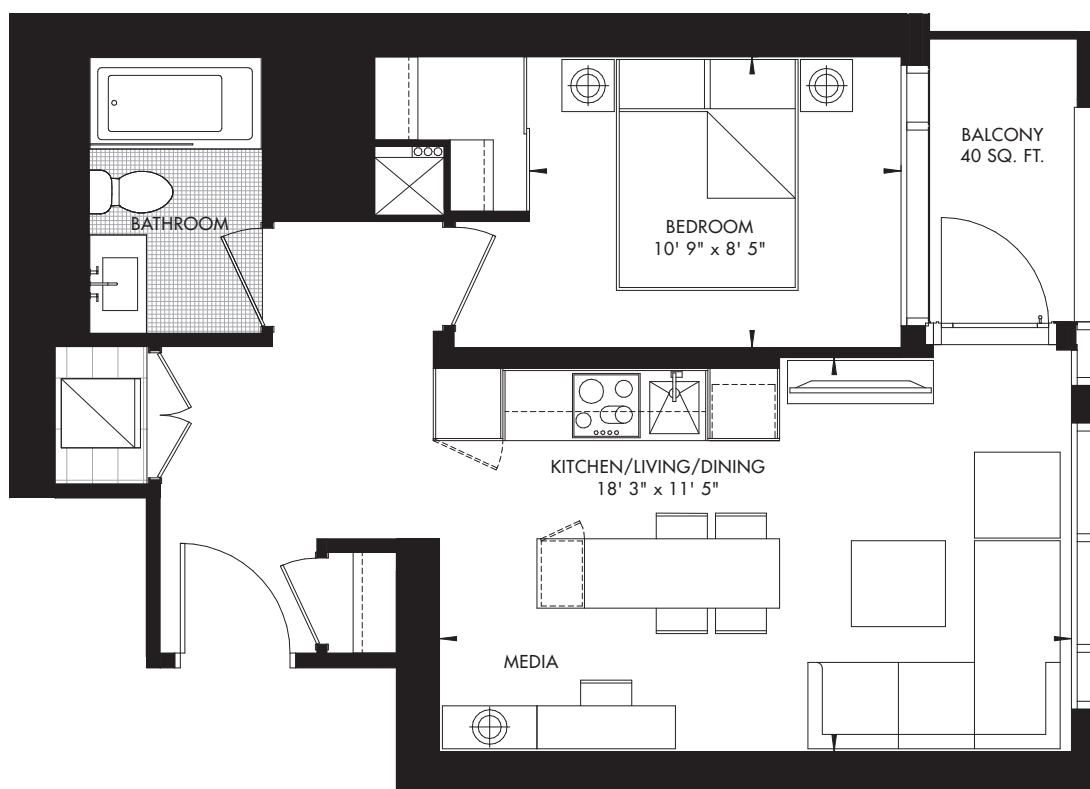


Prices and specifications subject to change without notice. E. & O.E. The dimensions shown on this plan are approximate only. Actual useable floor space within the unit may vary from any stated floor areas or dimensions on this plan. For more information on the method used for calculating the floor area of any unit reference should be made to builder bulletin no.22 Published by Tarion. The size, location and/or configuration of the windows and spandrel glass shown may be changed, varied or mirrored.

11|YV YORKVILLE 20

11 YORKVILLE • TORONTO

1 BED + MEDIA 578 SQ. FT.



LEVEL 25-28 – UNIT 07
CRU RESIDENCES

RIOCAN
LIVING

METROPIA

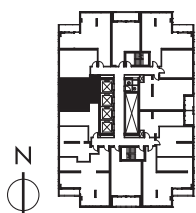
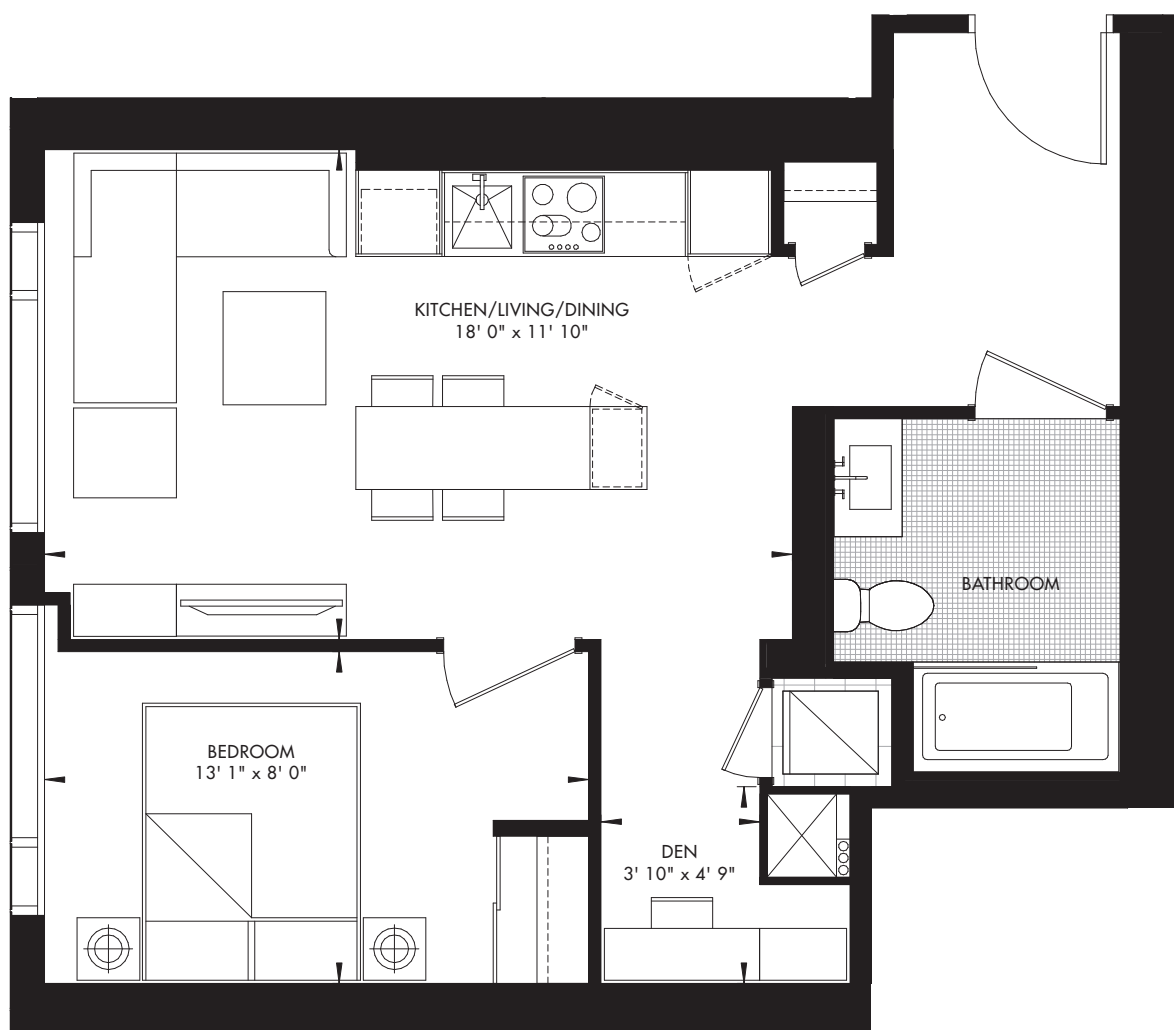


Prices and specifications subject to change without notice. E. & O.E. The dimensions shown on this plan are approximate only. Actual useable floor space within the unit may vary from any stated floor areas or dimensions on this plan. For more information on the method used for calculating the floor area of any unit reference should be made to builder bulletin no.22 Published by Tarion. The size, location and/or configuration of the windows and spandrel glass shown may be changed, varied or mirrored.

11|YV YORKVILLE 21

11 YORKVILLE • TORONTO

1 BED + DEN 581 SQ. FT.



LEVEL 10-23 – UNIT 01
CRU RESIDENCES

RIOCAN
LIVING

METROPIA

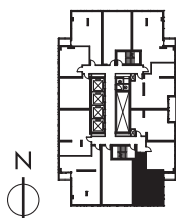
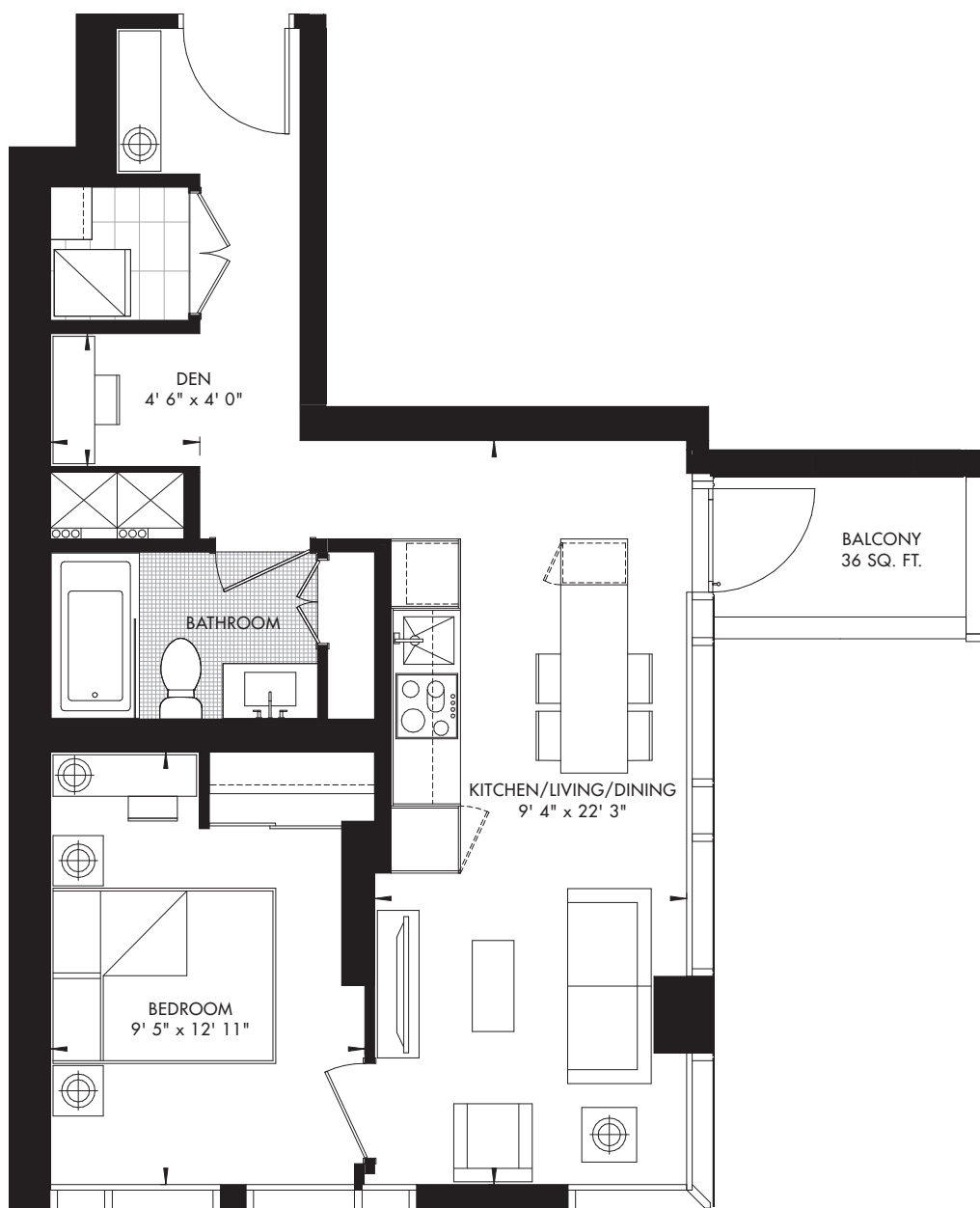


Prices and specifications subject to change without notice. E. & O.E. The dimensions shown on this plan are approximate only. Actual useable floor space within the unit may vary from any stated floor areas or dimensions on this plan. For more information on the method used for calculating the floor area of any unit reference should be made to builder bulletin no.22 Published by Tarion. The size, location and/or configuration of the windows and spandrel glass shown may be changed, varied or mirrored.

11|YV YORKVILLE 22

11 YORKVILLE • TORONTO

1 BED + DEN 584 SQ. FT.



LEVEL 25-28 – UNIT 09
CRU RESIDENCES

RIO CAN
LIVING

METROPIA

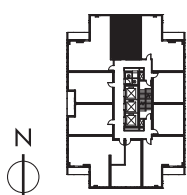
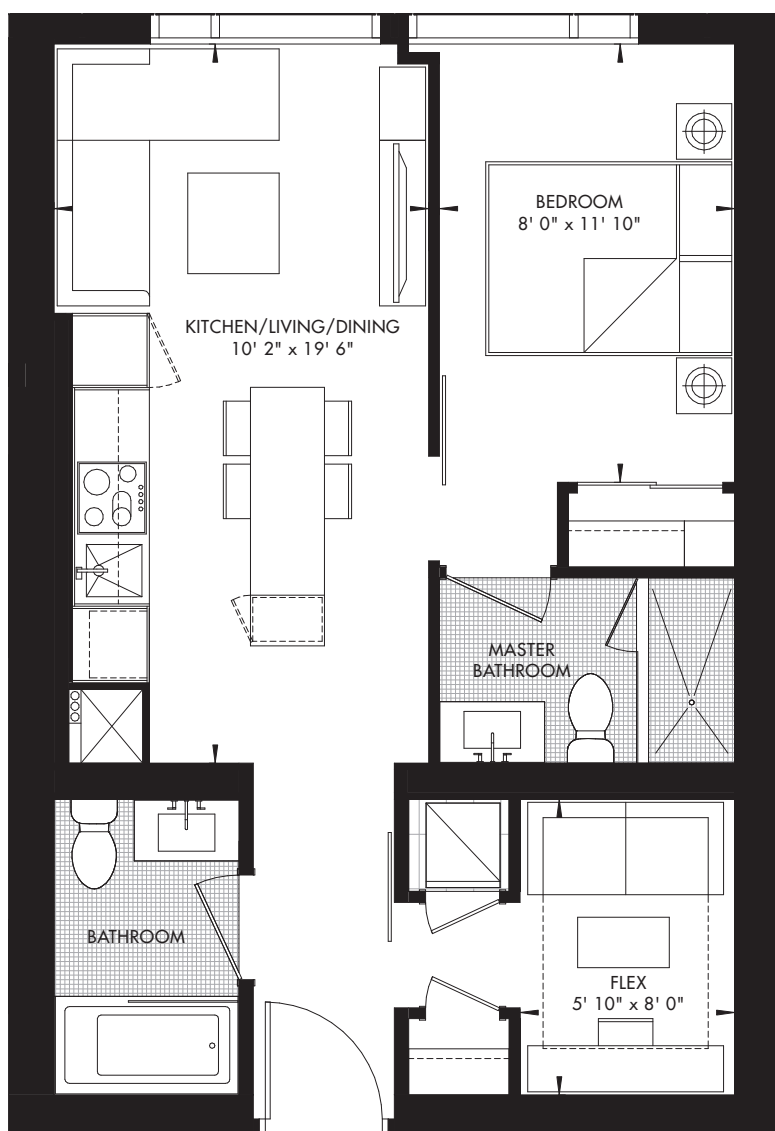


Prices and specifications subject to change without notice. E. & O.E. The dimensions shown on this plan are approximate only. Actual useable floor space within the unit may vary from any stated floor areas or dimensions on this plan. For more information on the method used for calculating the floor area of any unit reference should be made to builder bulletin no. 22 Published by Tarion. The size, location and/or configuration of the windows and spandrel glass shown may be changed, varied or mirrored.

11|YV YORKVILLE 23

11 YORKVILLE • TORONTO

1 BED + FLEX 597 SQ. FT.



LEVEL 51-62 - UNIT 03
PREMIER CRU RESIDENCES, GRAND CRU RESIDENCES

RIO CAN
LIVING

METROPIA

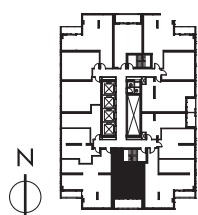
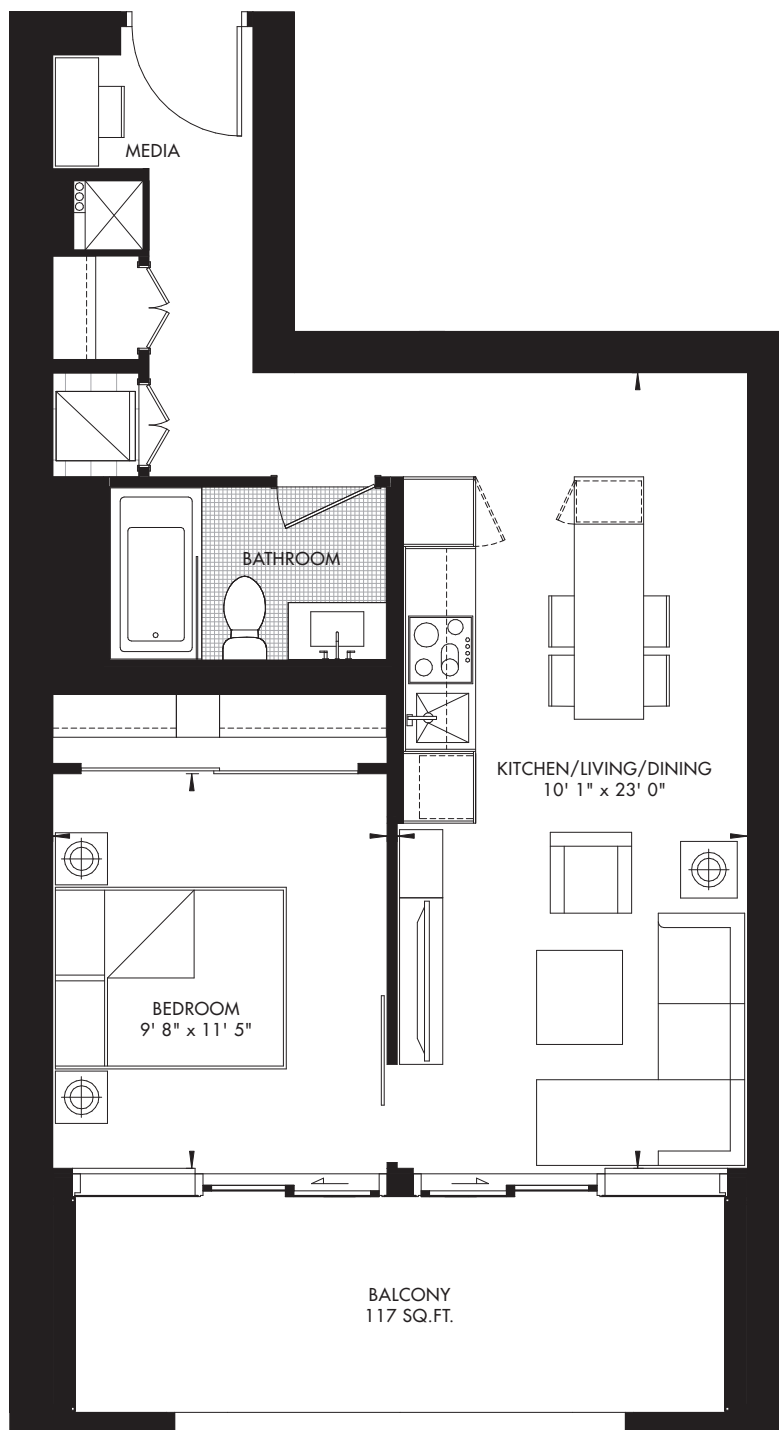


Prices and specifications subject to change without notice. E. & O.E. The dimensions shown on this plan are approximate only. Actual useable floor space within the unit may vary from any stated floor areas or dimensions on this plan. For more information on the method used for calculating the floor area of any unit reference should be made to builder bulletin no.22 Published by Tarion. The size, location and/or configuration of the windows and spandrel glass shown may be changed, varied or mirrored.

11|YV YORKVILLE 24

11 YORKVILLE • TORONTO

1 BED + MEDIA 603 SQ. FT.



LEVEL 10-23 – UNIT 11
CRU RESIDENCES

RIOCAN
LIVING

METROPIA

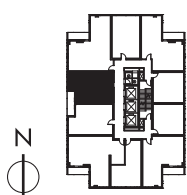
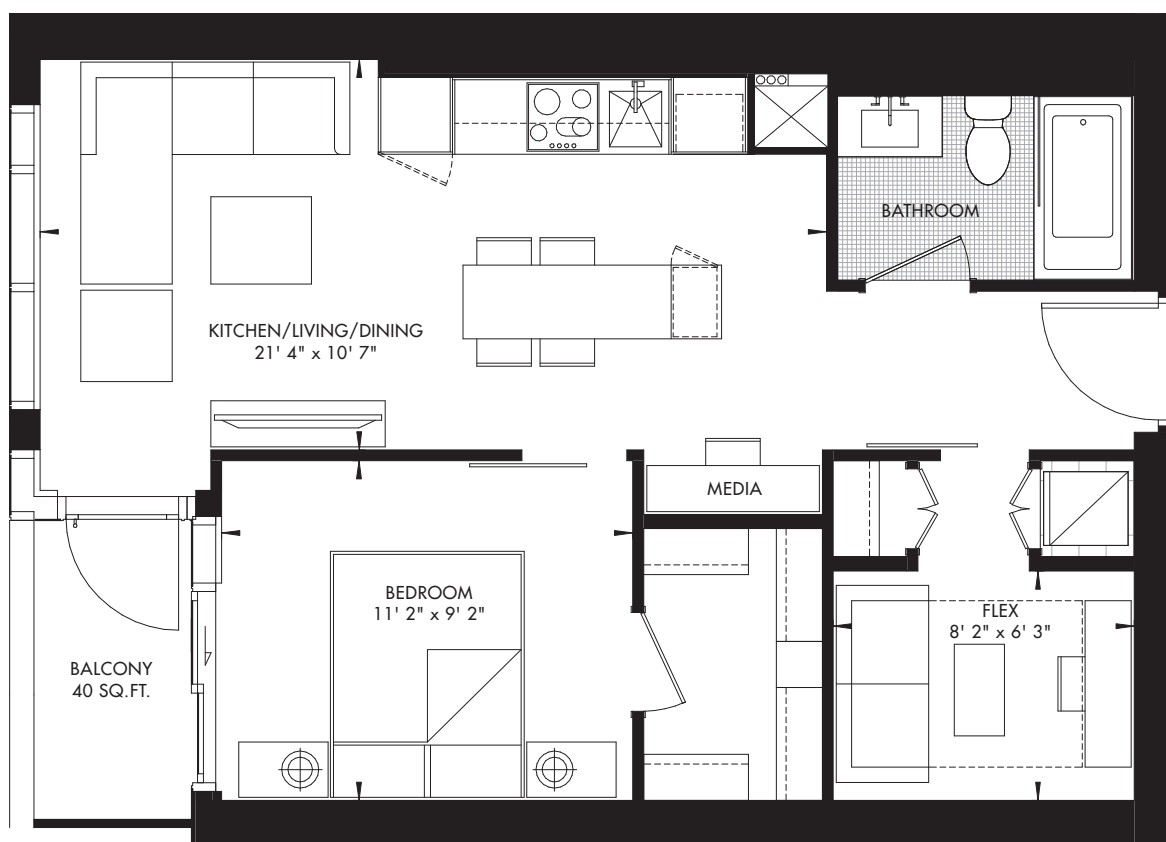


Prices and specifications subject to change without notice. E. & O.E. The dimensions shown on this plan are approximate only. Actual useable floor space within the unit may vary from any stated floor areas or dimensions on this plan. For more information on the method used for calculating the floor area of any unit reference should be made to builder bulletin no.22 Published by Tarion. The size, location and/or configuration of the windows and spandrel glass shown may be changed, varied or mirrored.

11|YV YORKVILLE 25

11 YORKVILLE • TORONTO

1 BED + FLEX + MEDIA 631 SQ. FT.



LEVEL 44-62 – UNIT 01
PREMIER CRU RESIDENCES, GRAND CRU RESIDENCES

RIO CAN
LIVING

METROPIA

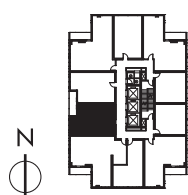


Prices and specifications subject to change without notice. E. & O.E. The dimensions shown on this plan are approximate only. Actual useable floor space within the unit may vary from any stated floor areas or dimensions on this plan. For more information on the method used for calculating the floor area of any unit reference should be made to builder bulletin no.22 Published by Tarion. The size, location and/or configuration of the windows and spandrel glass shown may be changed, varied or mirrored.

11|YV YORKVILLE 26

11 YORKVILLE • TORONTO

1 BED + FLEX + MEDIA 631 SQ. FT.



LEVEL 44-62 – UNIT 10
PREMIER CRU RESIDENCES, GRAND CRU RESIDENCES

RIO CAN
LIVING

METROPIA

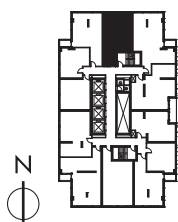
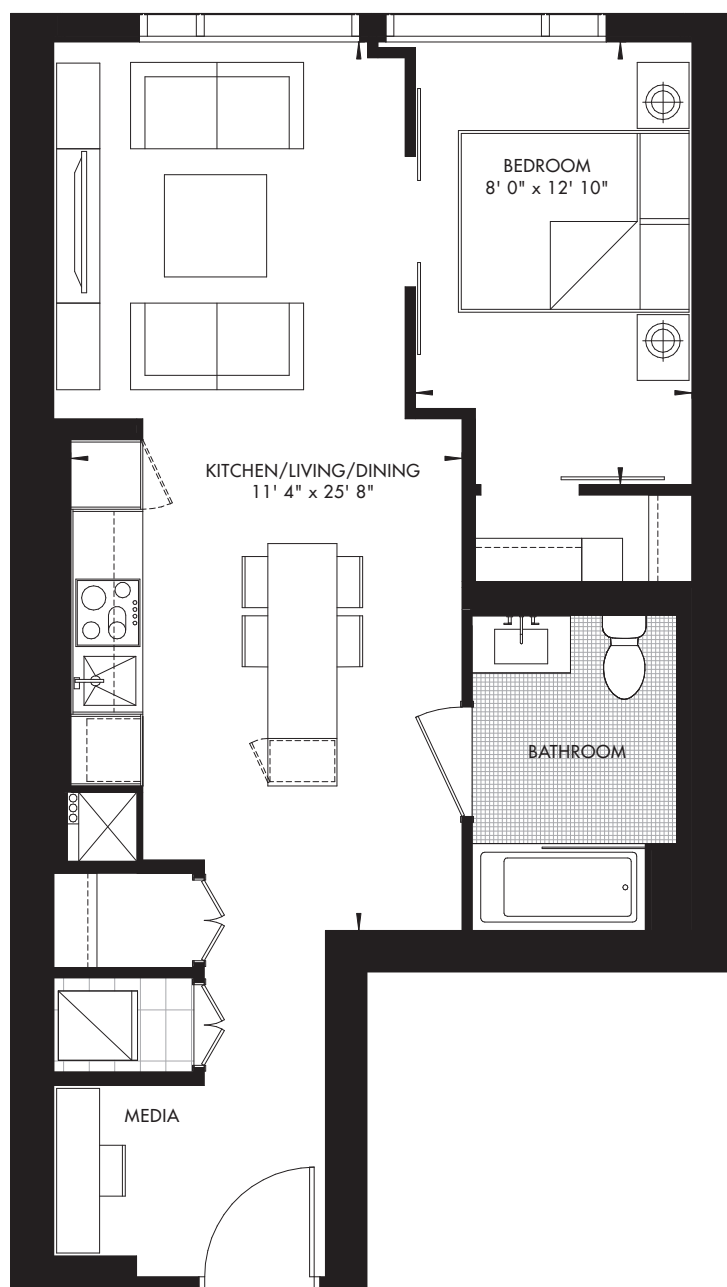


Prices and specifications subject to change without notice. E. & O.E. The dimensions shown on this plan are approximate only. Actual useable floor space within the unit may vary from any stated floor areas or dimensions on this plan. For more information on the method used for calculating the floor area of any unit reference should be made to builder bulletin no.22 Published by Tarion. The size, location and/or configuration of the windows and spandrel glass shown may be changed, varied or mirrored.

11|YV YORKVILLE 27

11 YORKVILLE • TORONTO

1 BED + MEDIA 635 SQ. FT.



LEVEL 24-28 – UNIT 04
CRU RESIDENCES

RIO CAN
LIVING

METROPIA

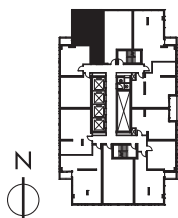
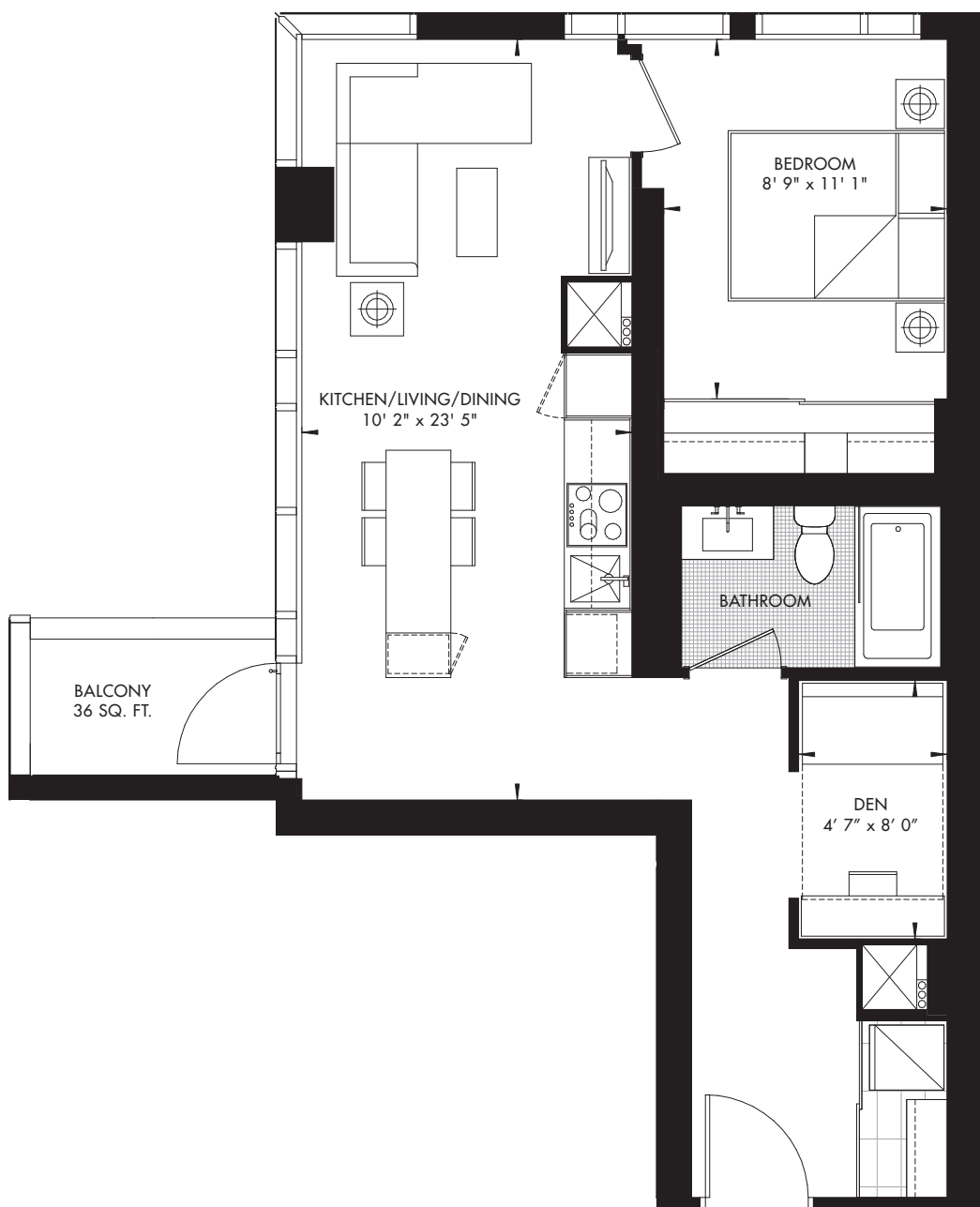


Prices and specifications subject to change without notice. E. & O.E. The dimensions shown on this plan are approximate only. Actual useable floor space within the unit may vary from any stated floor areas or dimensions on this plan. For more information on the method used for calculating the floor area of any unit reference should be made to builder bulletin no.22 Published by Tarion. The size, location and/or configuration of the windows and spandrel glass shown may be changed, varied or mirrored.

11|YV YORKVILLE 28

11 YORKVILLE • TORONTO

1 BED + DEN 638 SQ. FT.



LEVEL 25-29 – UNIT 03
CRU RESIDENCES

RIO CAN
LIVING

METROPIA

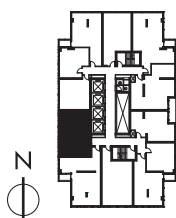
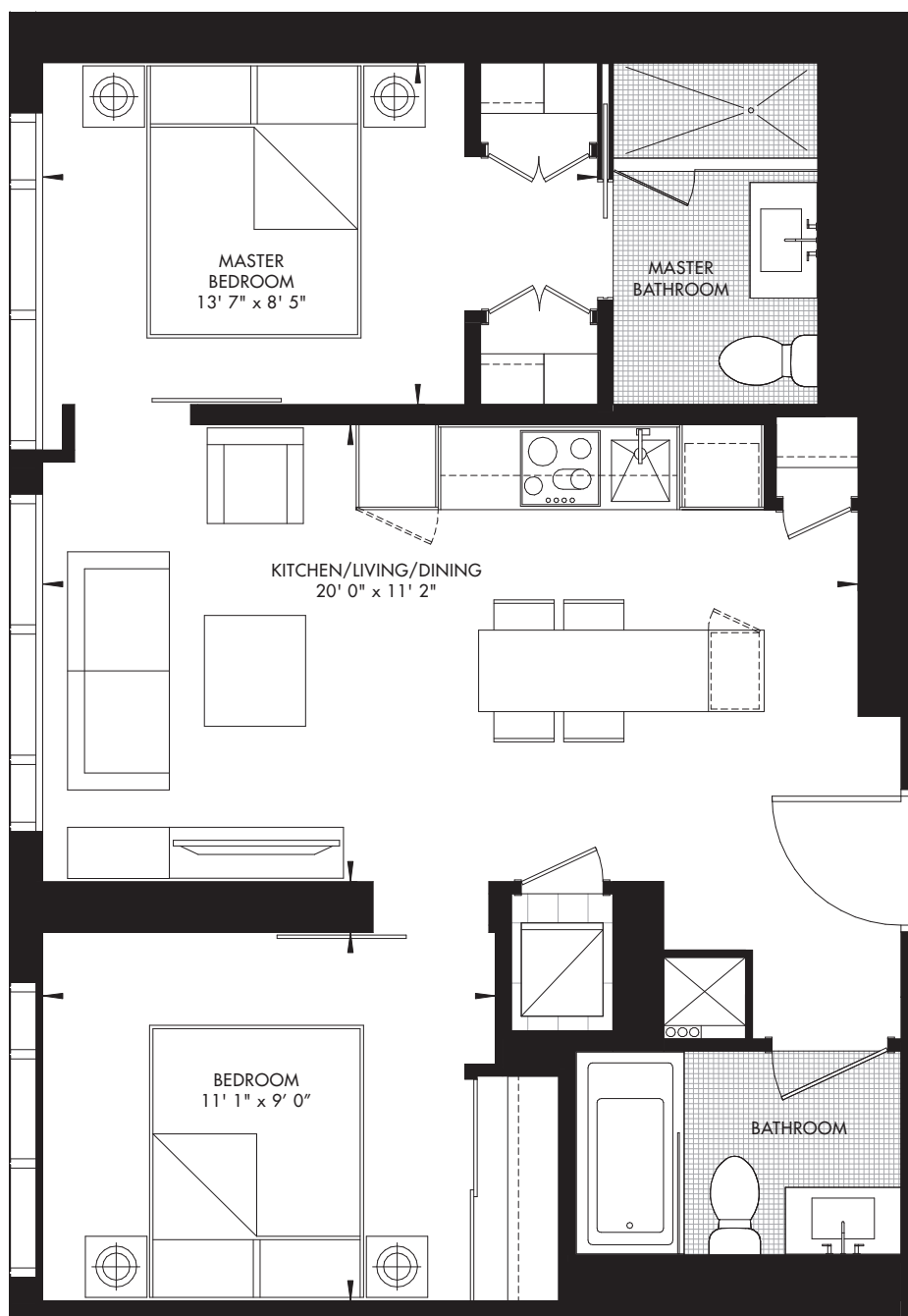


Prices and specifications subject to change without notice. E. & O.E. The dimensions shown on this plan are approximate only. Actual useable floor space within the unit may vary from any stated floor areas or dimensions on this plan. For more information on the method used for calculating the floor area of any unit reference should be made to builder bulletin no.22 Published by Tarion. The size, location and/or configuration of the windows and spandrel glass shown may be changed, varied or mirrored.

11|YV YORKVILLE 29

11 YORKVILLE • TORONTO

2 BED 695 SQ. FT.



LEVEL 25-28 – UNIT 12
LEVEL 29 – UNIT 09
CRU RESIDENCES

RIO CAN
LIVING

METROPIA

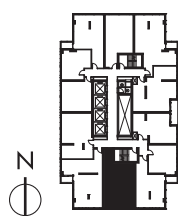
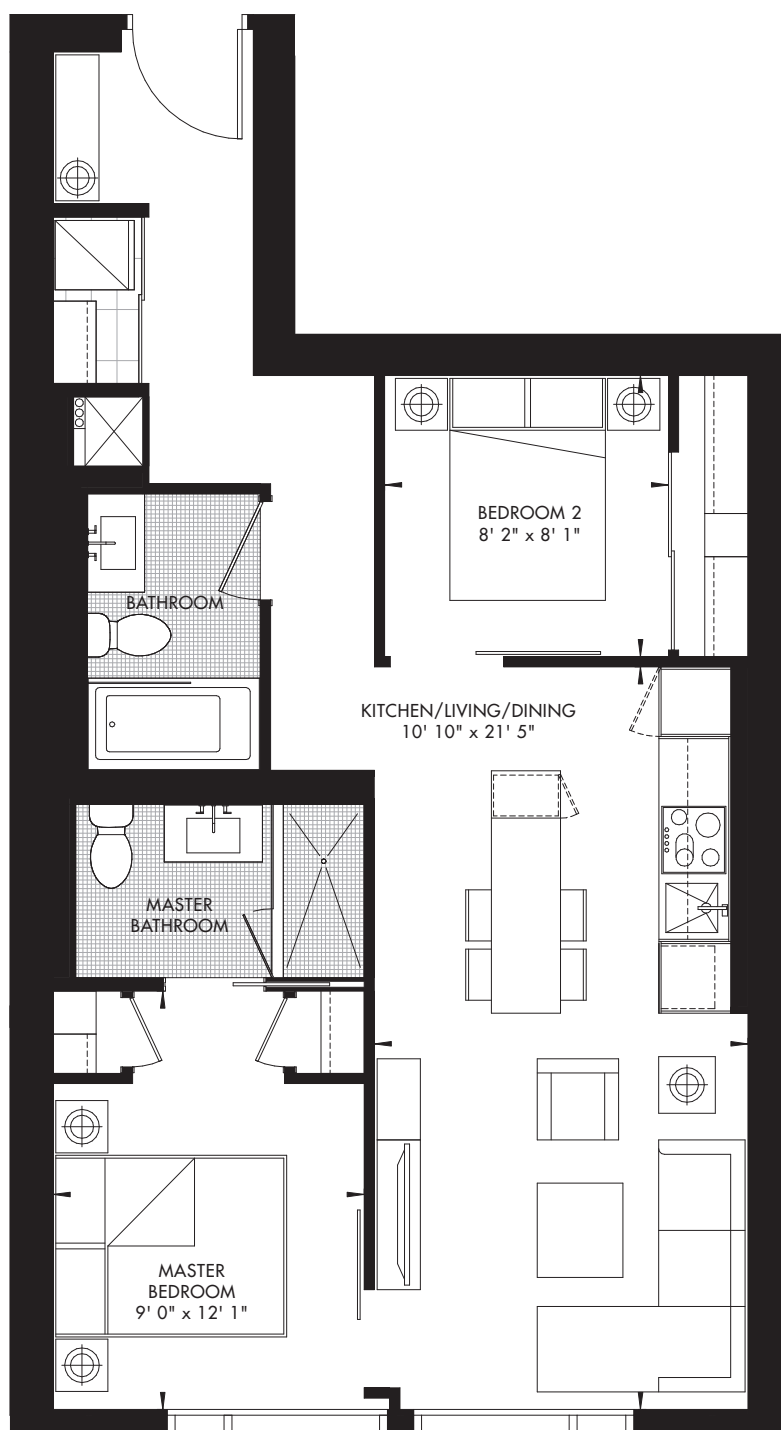


Prices and specifications subject to change without notice. E. & O.E. The dimensions shown on this plan are approximate only. Actual useable floor space within the unit may vary from any stated floor areas or dimensions on this plan. For more information on the method used for calculating the floor area of any unit reference should be made to builder bulletin no.22 Published by Tarion. The size, location and/or configuration of the windows and spandrel glass shown may be changed, varied or mirrored.

11|YV YORKVILLE 30

11 YORKVILLE • TORONTO

2 BED 750 SQ. FT.



LEVEL 24-28 – UNIT 10
CRU RESIDENCES

RIOCAN
LIVING

METROPIA

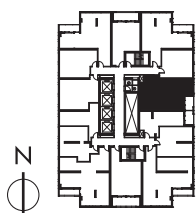
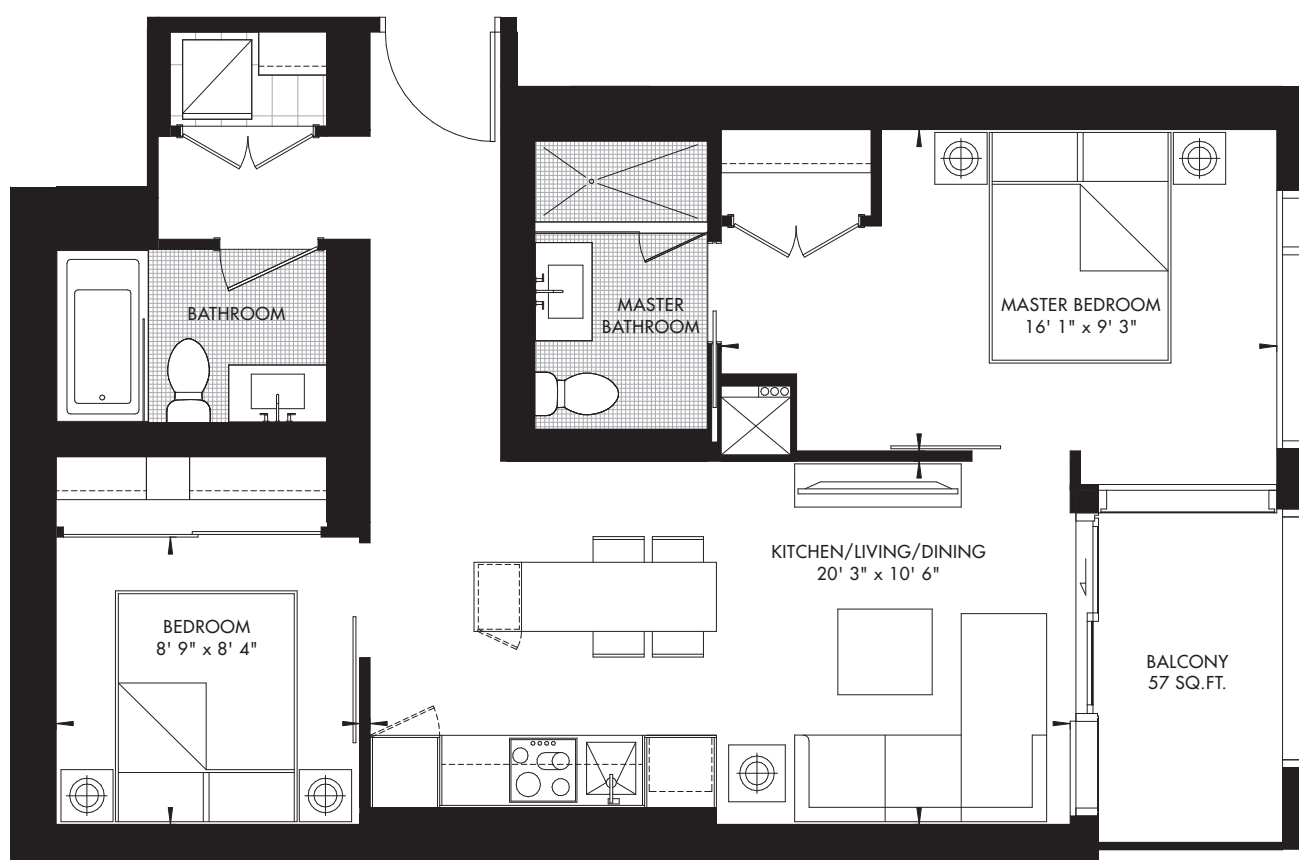


Prices and specifications subject to change without notice. E. & O.E. The dimensions shown on this plan are approximate only. Actual useable floor space within the unit may vary from any stated floor areas or dimensions on this plan. For more information on the method used for calculating the floor area of any unit reference should be made to builder bulletin no.22 Published by Tarion. The size, location and/or configuration of the windows and spandrel glass shown may be changed, varied or mirrored.

11|YV YORKVILLE 31

11 YORKVILLE • TORONTO

2 BED 759 SQ. FT.



LEVEL 10-23 – UNIT 07
CRU RESIDENCES

RIO CAN
LIVING

METROPIA

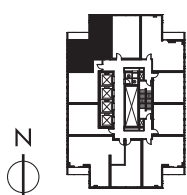
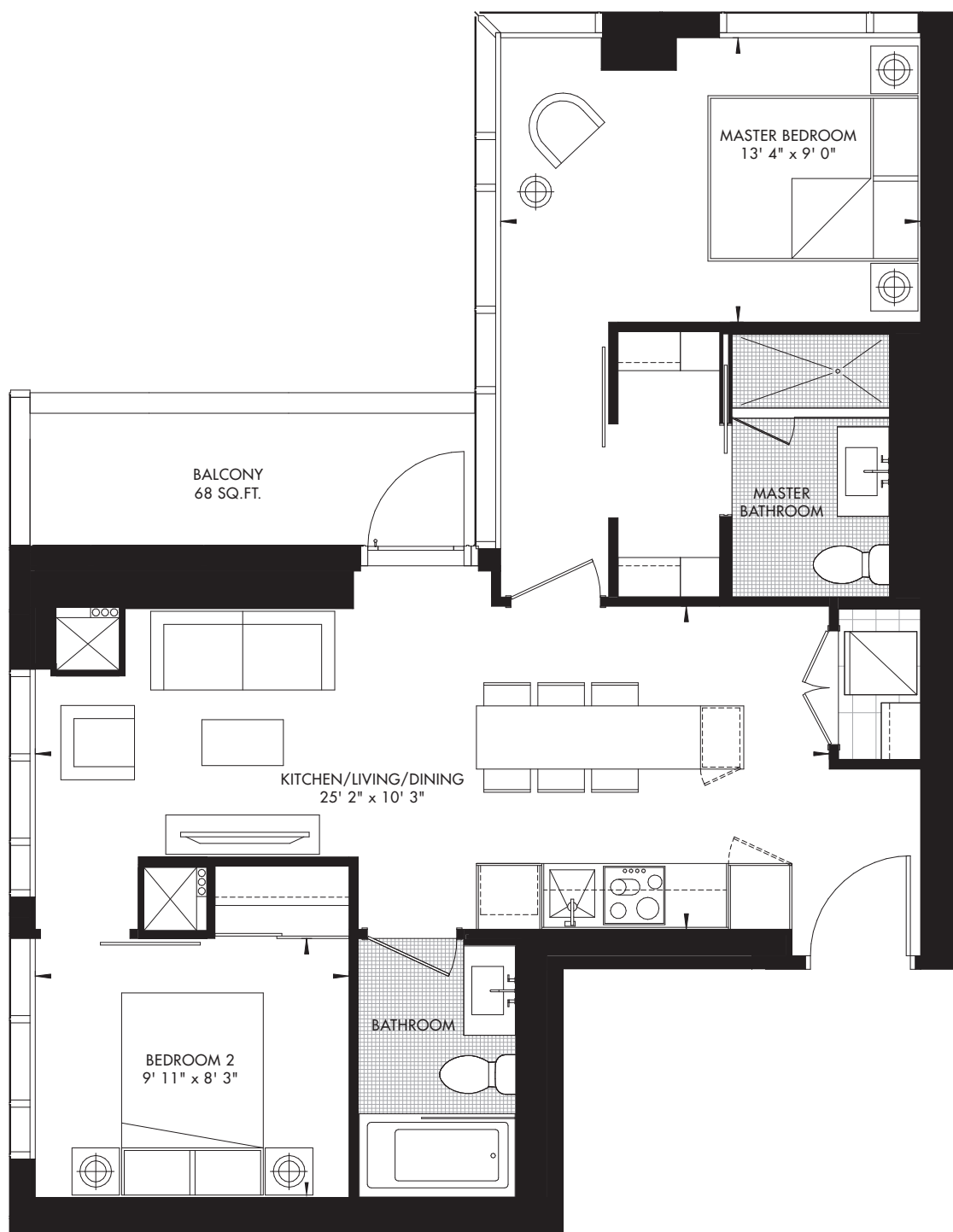


Prices and specifications subject to change without notice. E. & O.E. The dimensions shown on this plan are approximate only. Actual useable floor space within the unit may vary from any stated floor areas or dimensions on this plan. For more information on the method used for calculating the floor area of any unit reference should be made to builder bulletin no.22 Published by Tarion. The size, location and/or configuration of the windows and spandrel glass shown may be changed, varied or mirrored.

11|YV YORKVILLE 32

11 YORKVILLE • TORONTO

2 BED 782 SQ. FT.



LEVEL 31-43 – UNIT 02
CRU RESIDENCES, PREMIER CRU RESIDENCES

RIO CAN
LIVING

METROPIA

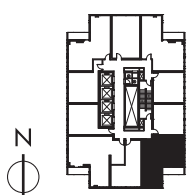
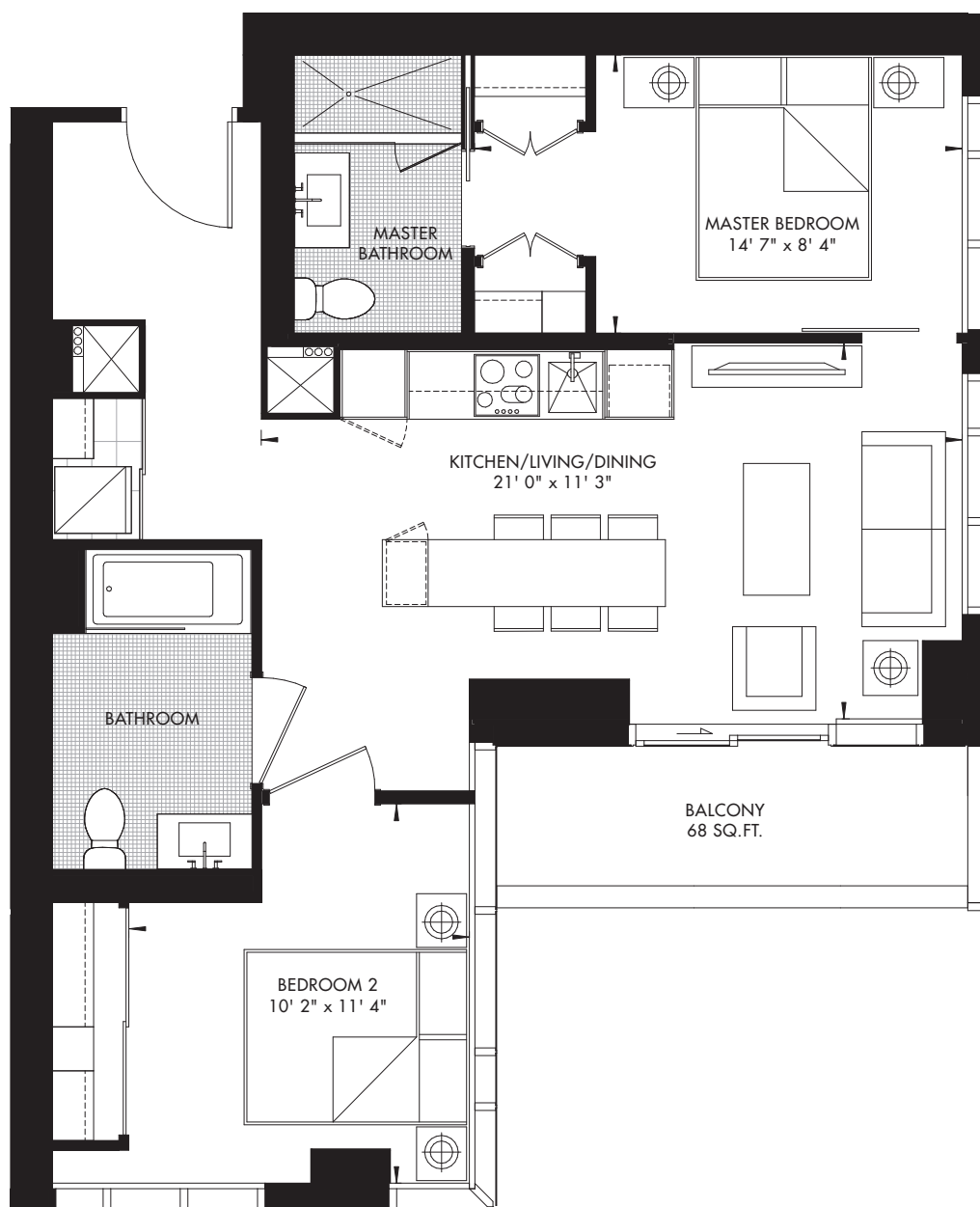


Prices and specifications subject to change without notice. E. & O.E. The dimensions shown on this plan are approximate only. Actual useable floor space within the unit may vary from any stated floor areas or dimensions on this plan. For more information on the method used for calculating the floor area of any unit reference should be made to builder bulletin no. 22 Published by Tarion. The size, location and/or configuration of the windows and spandrel glass shown may be changed, varied or mirrored.

11|YV YORKVILLE 33

11 YORKVILLE • TORONTO

2 BED 793 SQ. FT.



LEVEL 31-37 – UNIT 07
CRU RESIDENCES

RIOCAN
LIVING

METROPIA

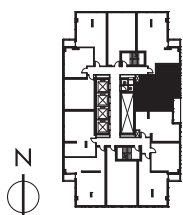
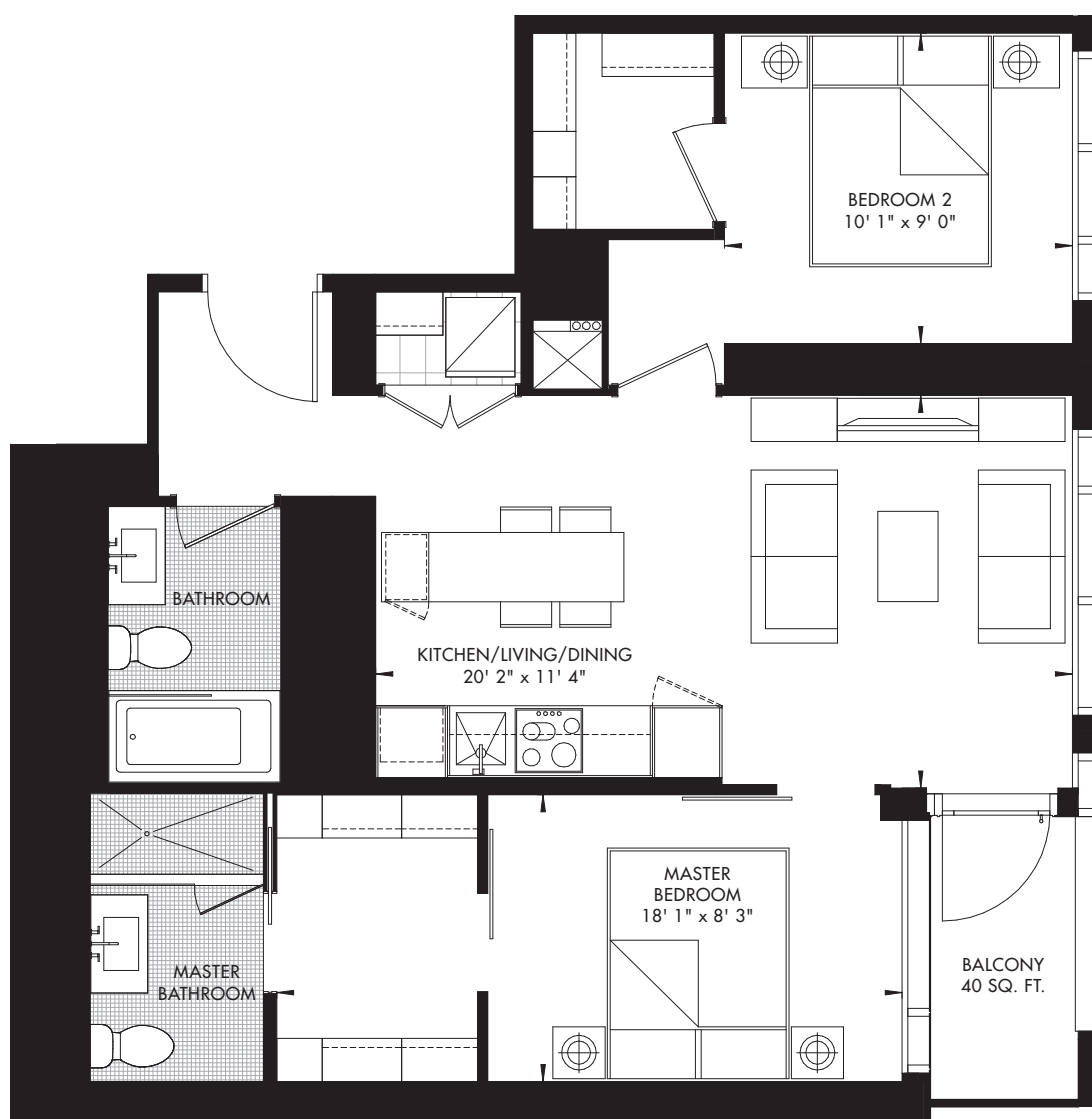


Prices and specifications subject to change without notice. E. & O.E. The dimensions shown on this plan are approximate only. Actual useable floor space within the unit may vary from any stated floor areas or dimensions on this plan. For more information on the method used for calculating the floor area of any unit reference should be made to builder bulletin no.22 Published by Tarion. The size, location and/or configuration of the windows and spandrel glass shown may be changed, varied or mirrored.

11|YV YORKVILLE 34

11 YORKVILLE • TORONTO

2 BED 813 SQ. FT.



LEVEL 25-28 – UNIT 06
CRU RESIDENCES

RIO CAN
LIVING

METROPIA

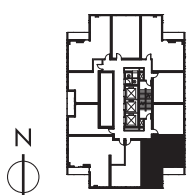
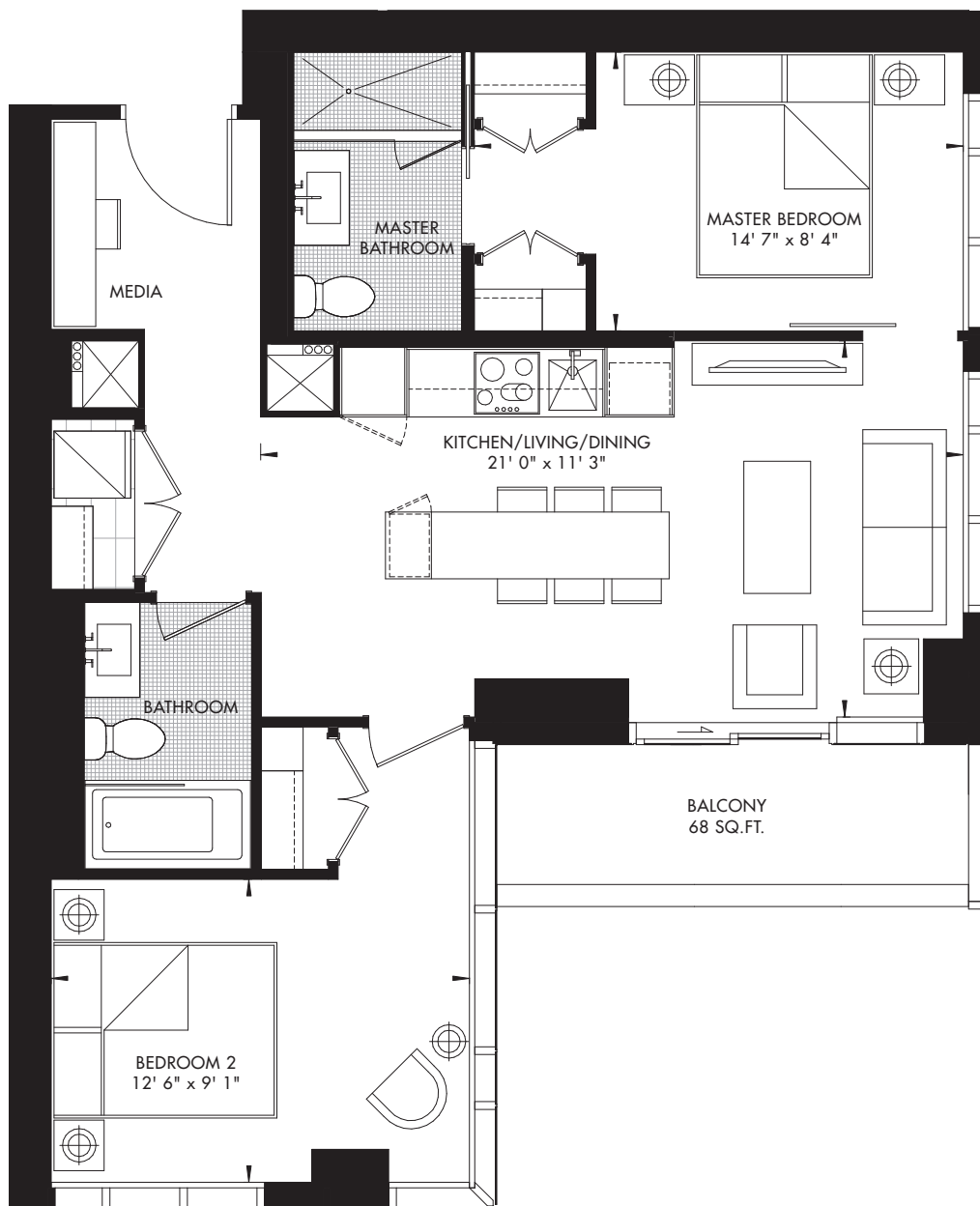


Prices and specifications subject to change without notice. E. & O.E. The dimensions shown on this plan are approximate only. Actual useable floor space within the unit may vary from any stated floor areas or dimensions on this plan. For more information on the method used for calculating the floor area of any unit reference should be made to builder bulletin no.22 Published by Tarion. The size, location and/or configuration of the windows and spandrel glass shown may be changed, varied or mirrored.

11|YV YORKVILLE 35

11 YORKVILLE • TORONTO

2 BED + MEDIA 792 SQ. FT.



LEVEL 38-62 – UNIT 07
CRU RESIDENCES, PREMIER CRU RESIDENCES, GRAND CRU RESIDENCES

RIO CAN
LIVING

METROPIA

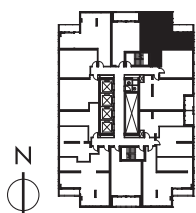


Prices and specifications subject to change without notice. E. & O.E. The dimensions shown on this plan are approximate only. Actual useable floor space within the unit may vary from any stated floor areas or dimensions on this plan. For more information on the method used for calculating the floor area of any unit reference should be made to builder bulletin no.22 Published by Tarion. The size, location and/or configuration of the windows and spandrel glass shown may be changed, varied or mirrored.

11|YV YORKVILLE 36

11 YORKVILLE • TORONTO

2 BED + MEDIA 806 SQ. FT.



LEVEL 11-23 – UNIT 05
CRU RESIDENCES

RIO CAN
LIVING

METROPIA

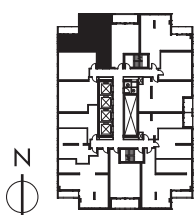
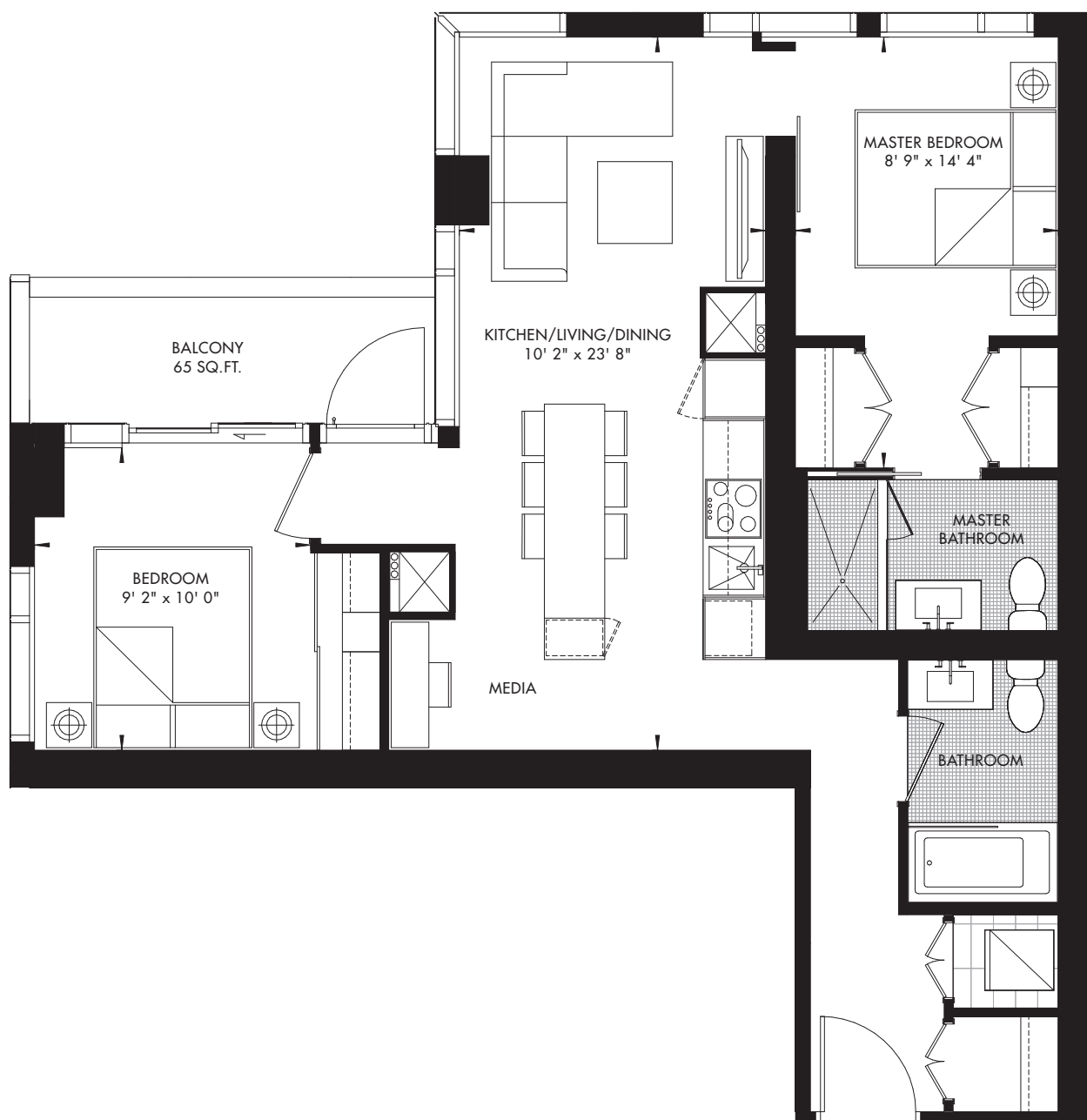


Prices and specifications subject to change without notice. E. & O.E. The dimensions shown on this plan are approximate only. Actual useable floor space within the unit may vary from any stated floor areas or dimensions on this plan. For more information on the method used for calculating the floor area of any unit reference should be made to builder bulletin no.22 Published by Tarion. The size, location and/or configuration of the windows and spandrel glass shown may be changed, varied or mirrored.

11|YV YORKVILLE 37

11 YORKVILLE • TORONTO

2 BED + MEDIA 810 SQ. FT.



LEVEL 11-23 – UNIT 03
CRU RESIDENCES

RIO CAN
LIVING

METROPIA

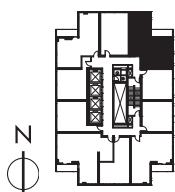
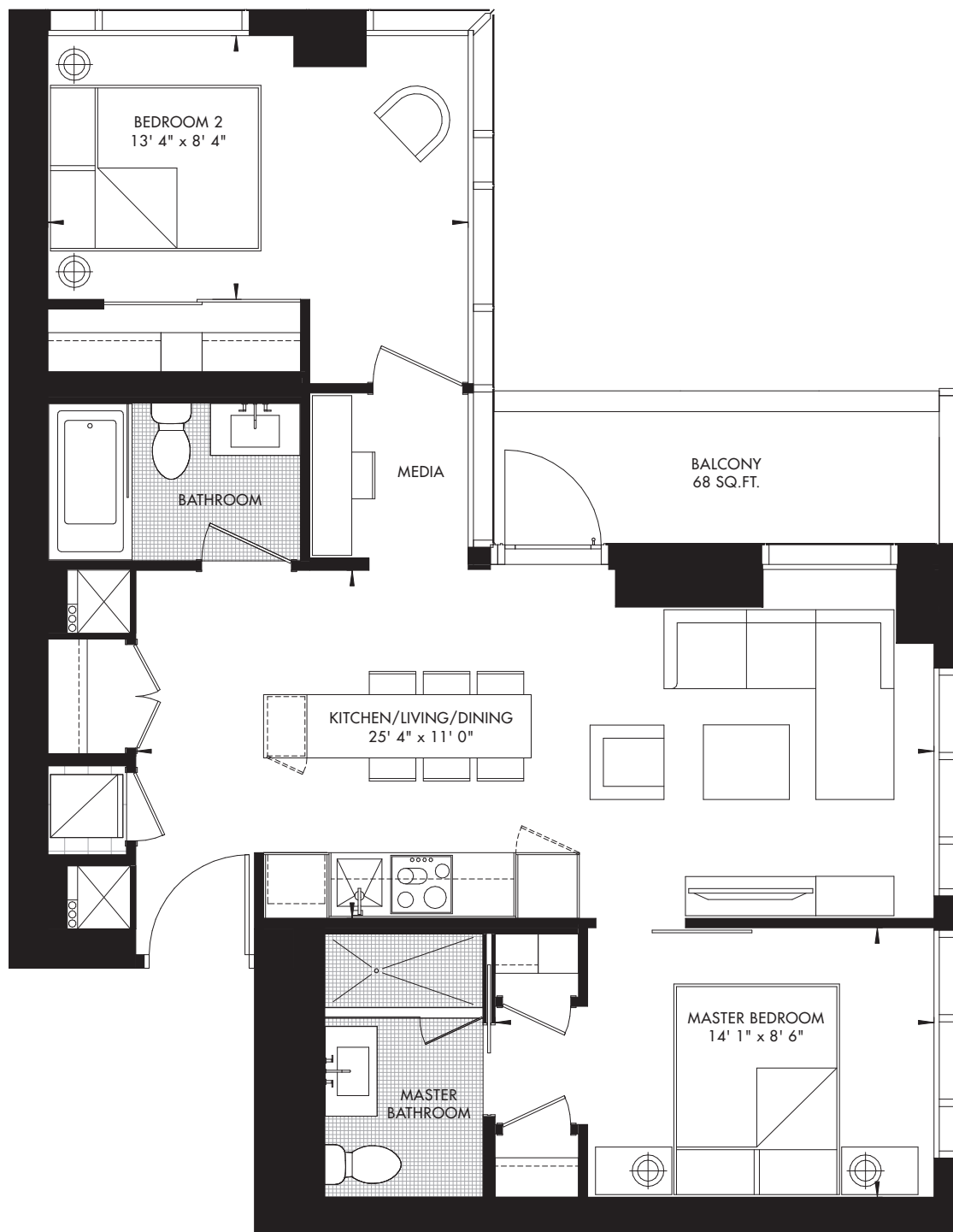


Prices and specifications subject to change without notice. E. & O.E. The dimensions shown on this plan are approximate only. Actual useable floor space within the unit may vary from any stated floor areas or dimensions on this plan. For more information on the method used for calculating the floor area of any unit reference should be made to builder bulletin no.22 Published by Tarion. The size, location and/or configuration of the windows and spandrel glass shown may be changed, varied or mirrored.

11|YV YORKVILLE 38

11 YORKVILLE • TORONTO

2 BED + MEDIA 823 SQ. FT.



LEVEL 31-62 – UNIT 04
CRU RESIDENCES, PREMIER CRU RESIDENCES, GRAND CRU RESIDENCES

RIOCAN
LIVING

METROPIA

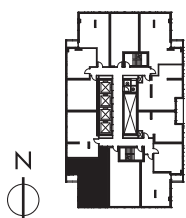
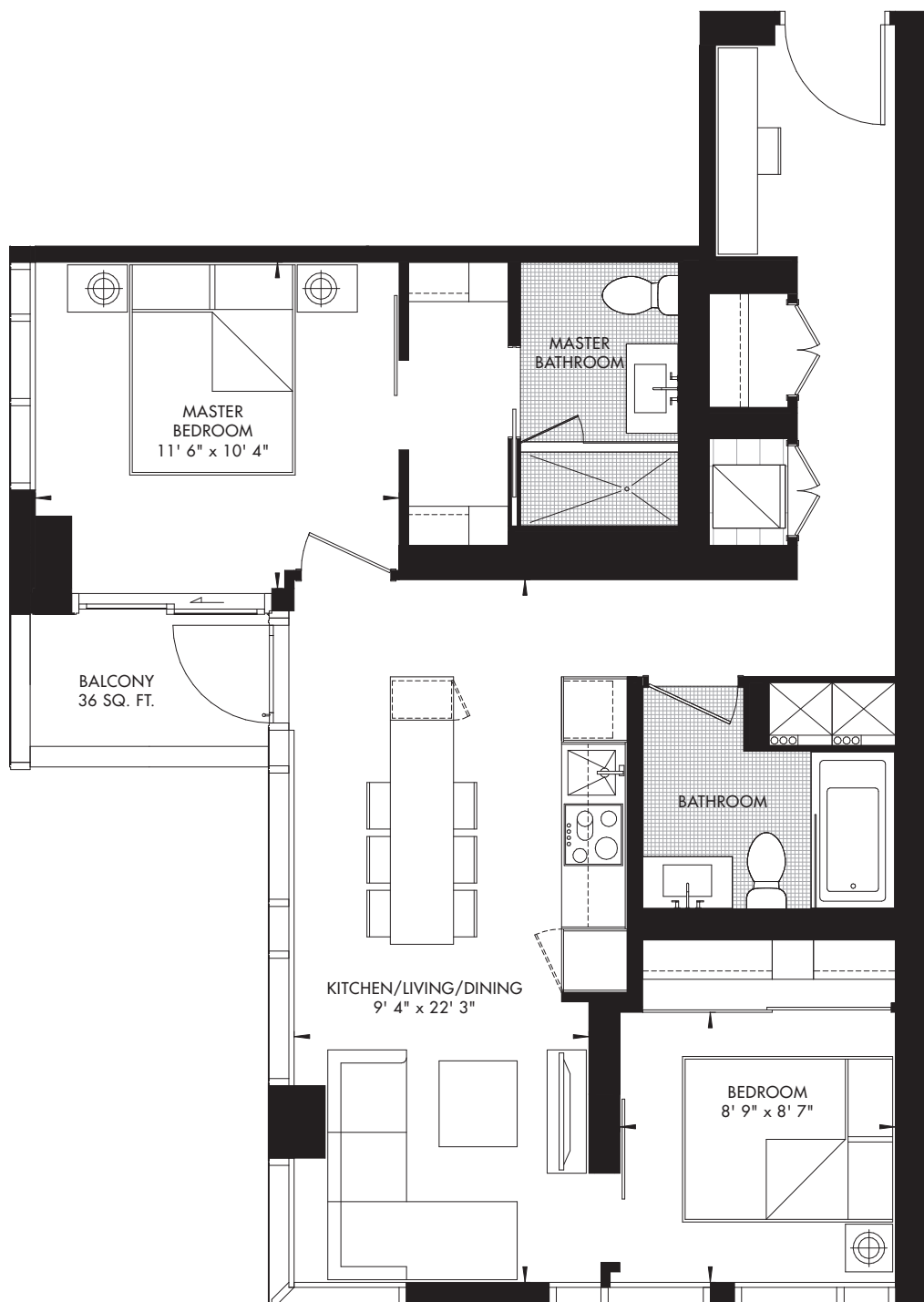


Prices and specifications subject to change without notice. E. & O.E. The dimensions shown on this plan are approximate only. Actual useable floor space within the unit may vary from any stated floor areas or dimensions on this plan. For more information on the method used for calculating the floor area of any unit reference should be made to builder bulletin no.22 Published by Tarion. The size, location and/or configuration of the windows and spandrel glass shown may be changed, varied or mirrored.

11|YV YORKVILLE 39

11 YORKVILLE • TORONTO

2 BED + MEDIA 830 SQ. FT.



LEVEL 25-28 – UNIT 11
LEVEL 29 – UNIT 08
CRU RESIDENCES

RIOCAN
LIVING

METROPIA

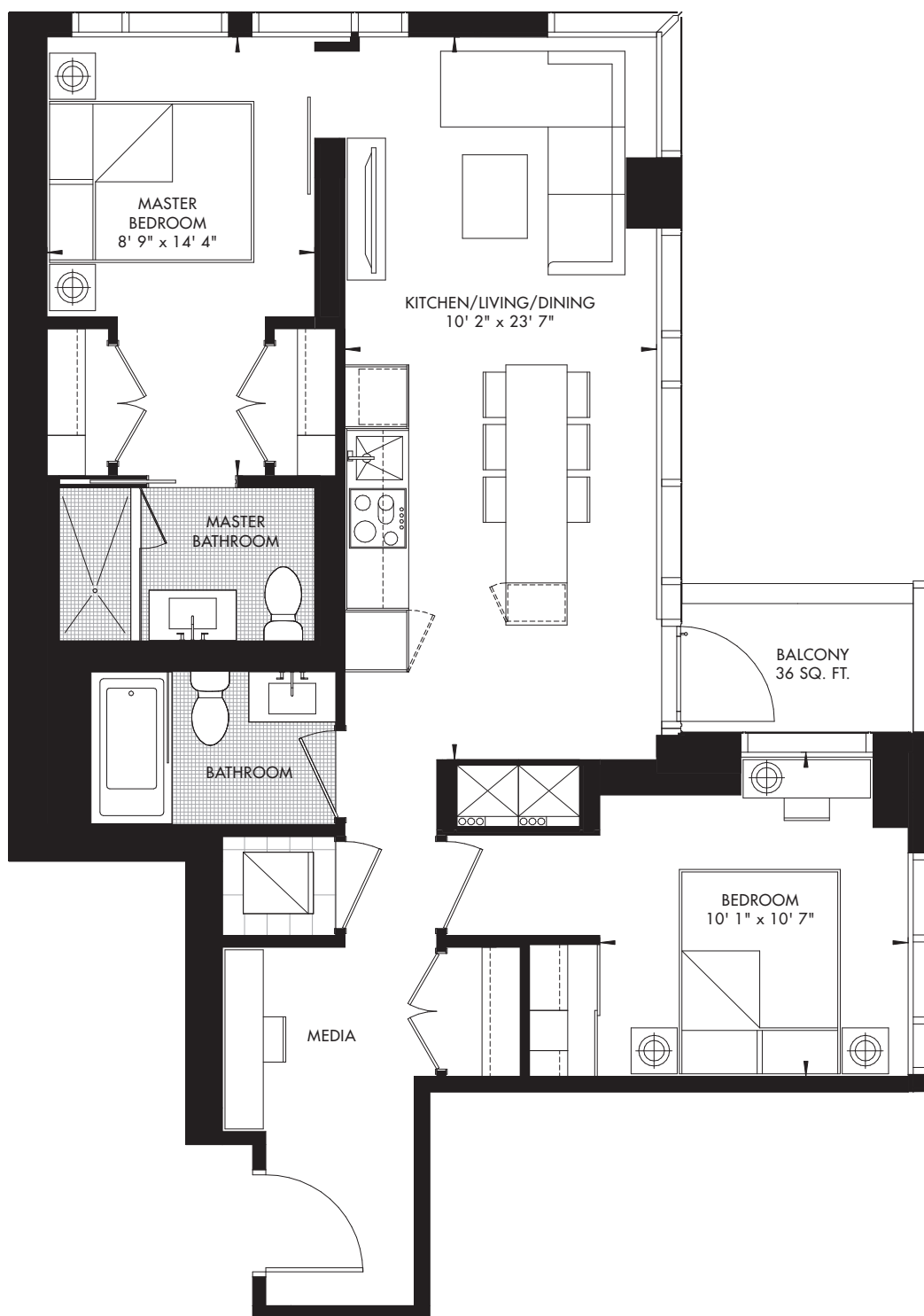


Prices and specifications subject to change without notice. E. & O.E. The dimensions shown on this plan are approximate only. Actual useable floor space within the unit may vary from any stated floor areas or dimensions on this plan. For more information on the method used for calculating the floor area of any unit reference should be made to builder bulletin no.22 Published by Tarion. The size, location and/or configuration of the windows and spandrel glass shown may be changed, varied or mirrored.

11|YV YORKVILLE 40

11 YORKVILLE • TORONTO

2 BED + MEDIA 849 SQ. FT.



LEVEL 25 -28 - UNIT 05
CRU RESIDENCES

RIO CAN
LIVING

METROPIA

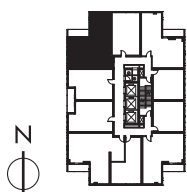
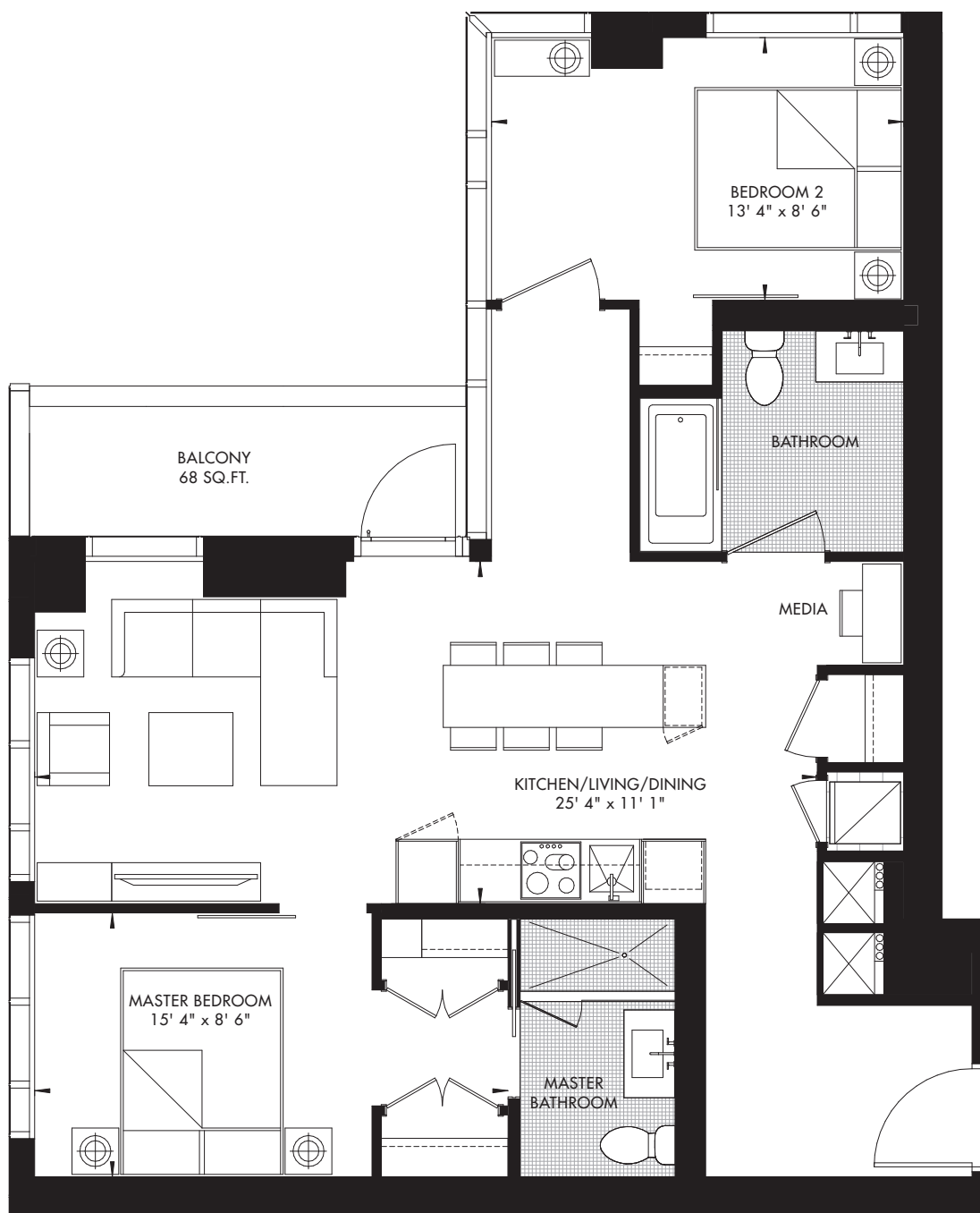


Prices and specifications subject to change without notice. E. & O.E. The dimensions shown on this plan are approximate only. Actual useable floor space within the unit may vary from any stated floor areas or dimensions on this plan. For more information on the method used for calculating the floor area of any unit reference should be made to builder bulletin no.22 Published by Tarion. The size, location and/or configuration of the windows and spandrel glass shown may be changed, varied or mirrored.

11|YV YORKVILLE 41

11 YORKVILLE • TORONTO

2 BED + MEDIA 896 SQ. FT.



LEVEL 44-62 – UNIT 02
PREMIER CRU RESIDENCES, GRAND CRU RESIDENCES

RIOCAN
LIVING

METROPIA

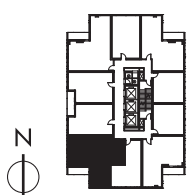
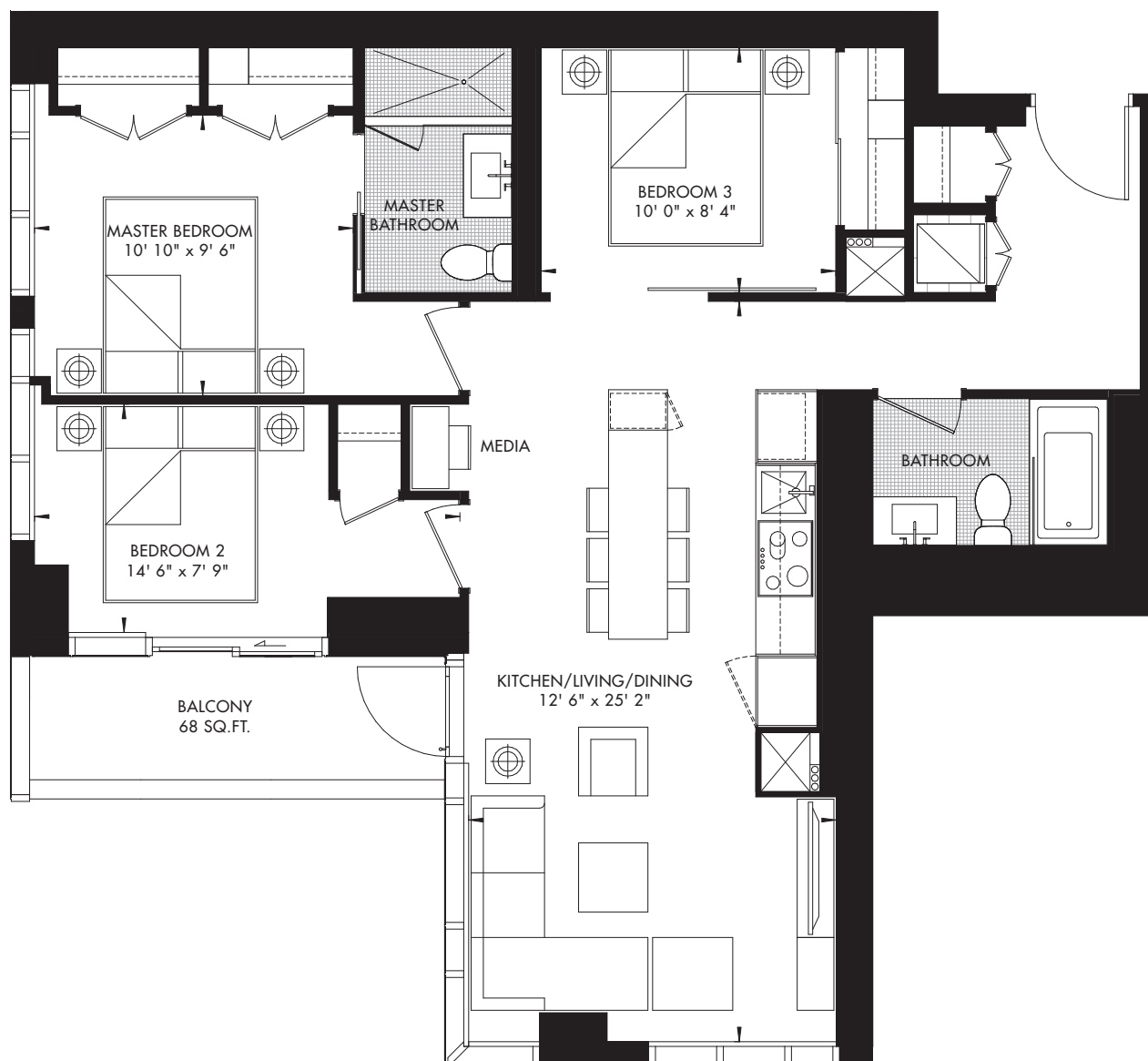


Prices and specifications subject to change without notice. E. & O.E. The dimensions shown on this plan are approximate only. Actual useable floor space within the unit may vary from any stated floor areas or dimensions on this plan. For more information on the method used for calculating the floor area of any unit reference should be made to builder bulletin no.22 Published by Tarion. The size, location and/or configuration of the windows and spandrel glass shown may be changed, varied or mirrored.

11|YV YORKVILLE 42

11 YORKVILLE • TORONTO

3 BED + MEDIA 987 SQ. FT.



LEVEL 44-62 - UNIT 09
PREMIER CRU RESIDENCES, GRAND CRU RESIDENCES

RIOCAN
LIVING

METROPIA

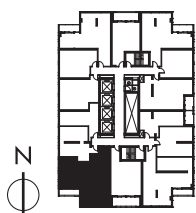
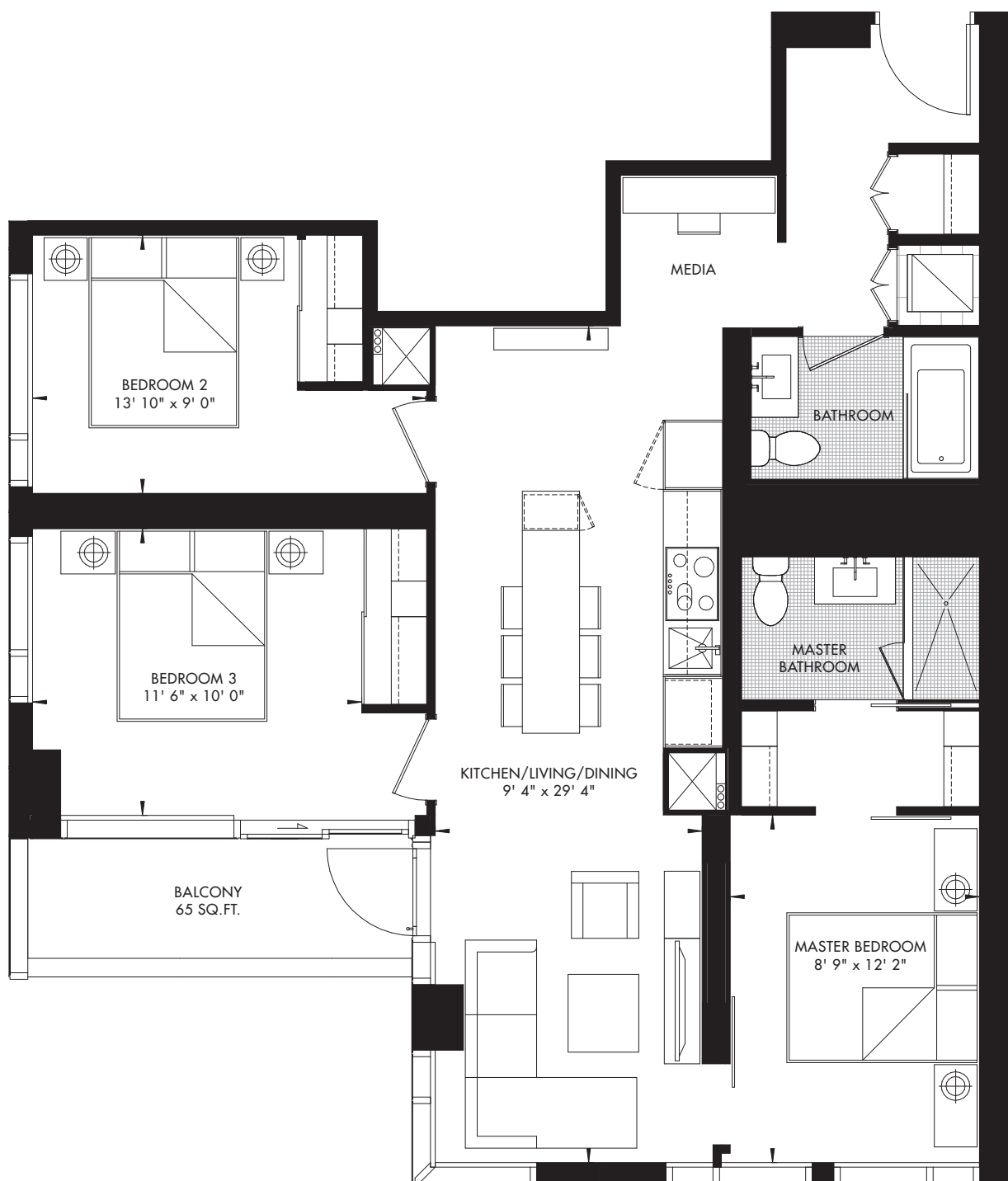


Prices and specifications subject to change without notice. E. & O.E. The dimensions shown on this plan are approximate only. Actual useable floor space within the unit may vary from any stated floor areas or dimensions on this plan. For more information on the method used for calculating the floor area of any unit reference should be made to builder bulletin no.22 Published by Tarion. The size, location and/or configuration of the windows and spandrel glass shown may be changed, varied or mirrored.

11|YV YORKVILLE 43

11 YORKVILLE • TORONTO

3 BED + MEDIA 1037 SQ. FT.



LEVEL 11-23 – UNIT 12
CRU RESIDENCES

RIO CAN
LIVING

METROPIA

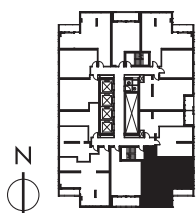


Prices and specifications subject to change without notice. E. & O.E. The dimensions shown on this plan are approximate only. Actual useable floor space within the unit may vary from any stated floor areas or dimensions on this plan. For more information on the method used for calculating the floor area of any unit reference should be made to builder bulletin no.22 Published by Tarion. The size, location and/or configuration of the windows and spandrel glass shown may be changed, varied or mirrored.

11|YV YORKVILLE 44

11 YORKVILLE • TORONTO

3 BED + FLEX 1056 SQ. FT.



LEVEL 11-23 – UNIT 10
CRU RESIDENCES

RIOCAN
LIVING

METROPIA

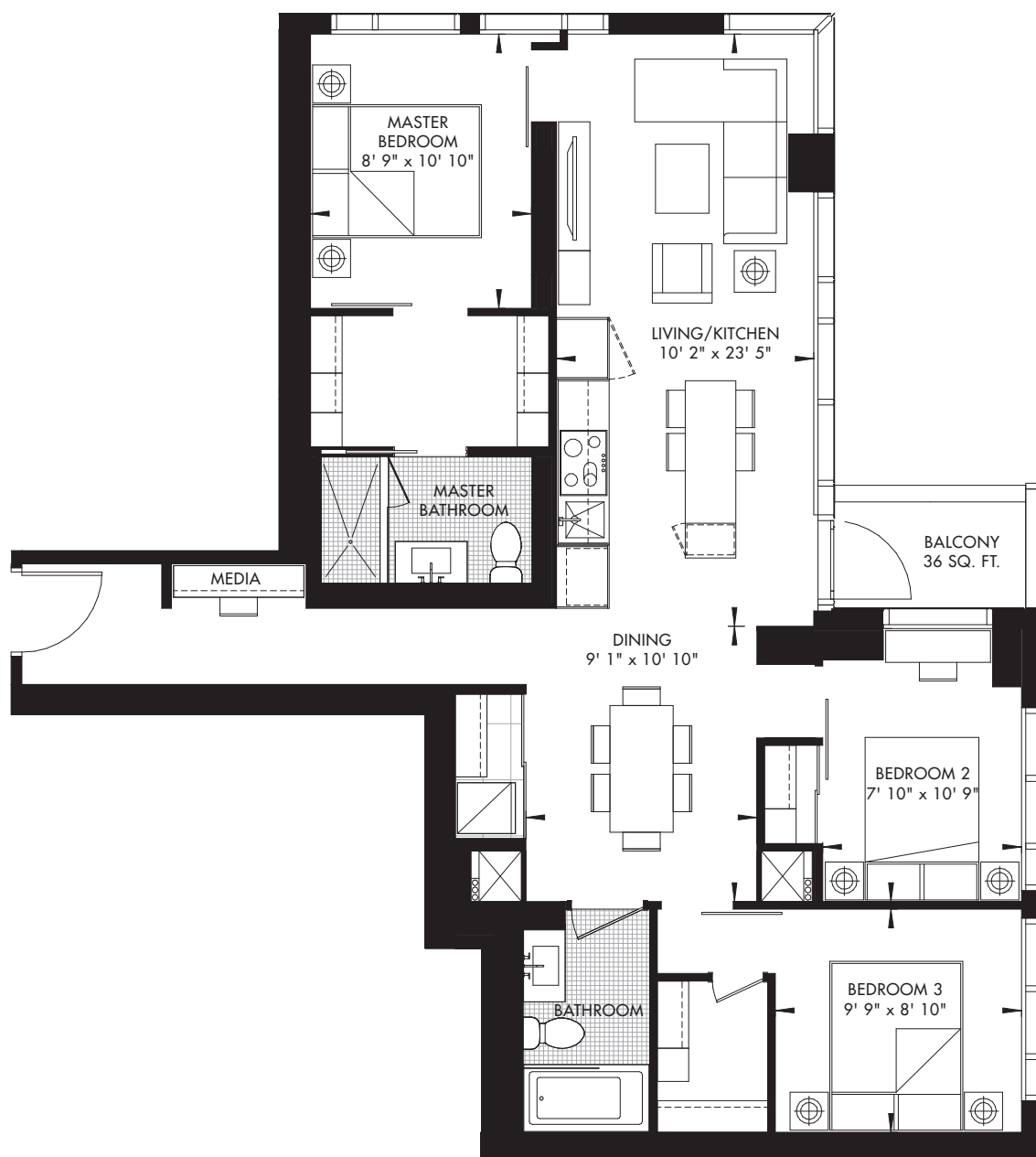


Prices and specifications subject to change without notice. E. & O.E. The dimensions shown on this plan are approximate only. Actual useable floor space within the unit may vary from any stated floor areas or dimensions on this plan. For more information on the method used for calculating the floor area of any unit reference should be made to builder bulletin no.22 Published by Tarion. The size, location and/or configuration of the windows and spandrel glass shown may be changed, varied or mirrored.

11|YV YORKVILLE 45

11 YORKVILLE • TORONTO

3 BED + MEDIA 1108 SQ. FT.



LEVEL 29 – UNIT 05
CRU RESIDENCES

RIO CAN
LIVING

METROPIA

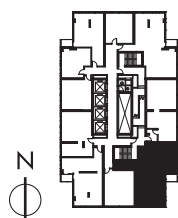


Prices and specifications subject to change without notice. E. & O.E. The dimensions shown on this plan are approximate only. Actual useable floor space within the unit may vary from any stated floor areas or dimensions on this plan. For more information on the method used for calculating the floor area of any unit reference should be made to builder bulletin no.22 Published by Tarion. The size, location and/or configuration of the windows and spandrel glass shown may be changed, varied or mirrored.

11|YV YORKVILLE 46

11 YORKVILLE • TORONTO

3 BED + DEN + MEDIA 1163 SQ. FT.



LEVEL 29 – UNIT 06
CRU RESIDENCES

RIO CAN
LIVING

METROPIA



Prices and specifications subject to change without notice. E. & O.E. The dimensions shown on this plan are approximate only. Actual useable floor space within the unit may vary from any stated floor areas or dimensions on this plan. For more information on the method used for calculating the floor area of any unit reference should be made to builder bulletin no.22 Published by Tarion. The size, location and/or configuration of the windows and spandrel glass shown may be changed, varied or mirrored.



11 YORKVILLE BRINGS TOGETHER THREE OF CANADA'S MOST
ESTEEMED DEVELOPERS AND THE RESULT IS PURE SYNERGY,
A WORLD-CLASS PROJECT AT A RENOWNED ADDRESS,
SHAPED BY A COLLECTIVE EXPERTISE THAT GATHERS MORE
THAN A HALF CENTURY OF EXPERIENCE.

RIO CAN LIVING

Since 1993, RioCan has helped shape the places Canadians want to work and shop. Now, RioCan Living is shaping the places they want to live. We know that building a community takes more than bricks and mortar. It takes people. When we select a project location and building team, we're thinking about the people who will one day call it home. Our goal is to enhance the culture of each neighbourhood we work in through listening, discovery, and innovation. Every one of our developments is backed by our proven performance and commitment to providing impeccable management, convenient access to major commuter routes, world-class architecture, best-in-class amenities, and expertly curated retail experiences. This is how we're helping to shape the future. This is RioCan Living.

METROPIA

Under the steadfast leadership of a respected industry giant – Founder, Chairman & CEO Howard Sokolowski – the Metropia name has become synonymous with integrity. The Toronto-based premier real estate developers have led the development of over 30,000 homes and have been recognized with some of the industry's highest honours. With a reputation for quality construction, thriving communities, solid integrity, and exceptional customer care, Metropia delivers undeniable value, changing skylines and neighbourhoods, and redefining the meaning of home.



Capital Developments is a leading Canadian real estate development company, with international roots. Through the mid 90's and early aughts, founders Todd Cowan and Jordan Dermer were instrumental in the development of over 10 million square feet in Europe before turning their sights back to home grown soil. Today the company has an impressive portfolio of design-forward developments across Canada, projects that have created meaningful connections for communities, cities, and the country as a whole.

www.condopark.ca